



Fall 2015

# Safety Accessories Catalog





# Index

<b>Committed to Safety .....</b>	<b>2-5</b>
<b>Auxiliary Lighting .....</b>	<b>6-8</b>
<b>Sealed Beam .....</b>	<b>8</b>
<b>Lights: LED Work/Stop/Strobe Lights .....</b>	<b>9</b>
<b>Strobe Lights .....</b>	<b>10-11</b>
<b>Turn Signals .....</b>	<b>11</b>
<b>Interior Lights .....</b>	<b>12</b>
<b>Stop/Tail/Backup Lights .....</b>	<b>12-13</b>
<b>Interior Lights .....</b>	<b>13</b>
<b>Bulbs by CLARK/Industry # and Type .....</b>	<b>14-16</b>
<b>Rain Caps &amp; Shields .....</b>	<b>18</b>
<b>Mirrors .....</b>	<b>19</b>
<b>Alarms &amp; Horns .....</b>	<b>20-21</b>
<b>Seat Belts .....</b>	<b>22</b>
<b>Static &amp; Tie Straps .....</b>	<b>23</b>
<b>Fans .....</b>	<b>23</b>
<b>Safety Accessories .....</b>	<b>24</b>
<b>Restraints .....</b>	<b>25</b>
<b>Apparel .....</b>	<b>26-27</b>
<b>Safety Decal Kits .....</b>	<b>28</b>
<b>Reflective Tapes .....</b>	<b>29</b>
<b>Miscellaneous Decals .....</b>	<b>29</b>
<b>Paint .....</b>	<b>30</b>

## Ask your **CLARK TOTALIFT®** Dealer about...

### Training

Your operators and mechanics are key to making your operation safe. Be sure they are qualified to operate your equipment. OSHA requires training for forklift operators. CLARK dealers can provide help with operator and mechanic training courses and materials and offer a variety of training packages for stand-up, sit-down and pallet trucks.

### Manuals and Publications

There are many helpful manuals and publications available through your CLARK dealer. Maintenance and parts manuals, as well as operators manuals, are ordered using the truck serial number. If you are starting a training program, ask your CLARK dealer about training materials. Rules for Safe Industrial Truck Operation and Employers Guide to Material Handling Safety are booklets that can help your operators learn more about safety.

### Attachments

Your dealer representative may be able to suggest an attachment to help you do more jobs more safely or more efficiently. Check with your equipment supplier on the capacity rating of the truck when adding or changing an attachment. The capacity plate must be updated to show the correct rating.

### Plant Surveys

Trained dealership personnel can evaluate your operation to check whether your trucks are right for the work you have them doing. They will look at the loads you are handling, and compare the size, weight and dimensions of the load to the trucks rated capacity. They can tell you whether you are using the right type of tire for the work surface.

### Planned Maintenance

Have trained dealer mechanics inspect your trucks to be sure they are working properly. Good maintenance can make trucks safer and more productive with less downtime. Maintenance and parts manuals can be ordered from your CLARK dealer if they are damaged or missing.

A mechanic or your operators should examine trucks before they are placed in service, at the beginning of each shift, to be sure the trucks are safe to operate. This is an OSHA requirement. If there is something wrong with a truck, the problem must be reported, and the truck should be taken out of service immediately for repair. The Operators Daily Checklist is a form available from your CLARK dealer that your operators or mechanics can use when performing this check.

### Video Programs

Your CLARK dealer has a large selection of video programs, including operator training, maintenance, plant safety and application videos. In addition to English, many operator and safety training videos are available in Spanish.





# Committed to Safety

**Safety** is an important part of CLARK's commitment to customer satisfaction. Although safety is engineered into every truck, CLARK doesn't stop there. CLARK offers a full range of products, services and publications to help you improve material handling safety in your operation. As an employer, it is your responsibility to provide a safe working environment. Some people may think that installing warning lights or alarms will solve their safety problems, but ensuring safety is not that simple. No single combination of safety equipment can provide the means to the safest environment in all applications. Since your operation is unique, it probably has some unique safety considerations. To improve safety in your operation, you should have an overall safety program that addresses your specific safety problems.

To help you learn more about what you should do to improve material handling safety in your business, CLARK has published a booklet called **Employers Guide to Material Handling Safety**. Ask your CLARK dealer for a copy. We at CLARK believe that to have an effective safety program, you must do at least the following three things:

**Follow all regulations.**  
**Start and maintain an operator selection and training program.**  
**Evaluate your operation and make any changes necessary to provide a safe material handling environment.**

The **Employers Guide to Material Handling Safety** is intended to help you with each of these areas.

**Understand and follow all federal, state, provincial and local regulations and industry standards regarding material handling.** You should read and understand OSHA Safety and Health Standards Subpart N-Materials Handling and Storage, Section 1910.178 Powered Industrial Trucks. Individual states and provinces may have additional occupational safety and health guidelines, so have your own legal counsel determine the actual requirements for your business. There are also industry standards such as ITSDf B56, NSC and other helpful publications, with information on where to get them, can be found on page 2-4 of the Employers Guide.

**Start and maintain an operator selection and training program.** When hiring operators, it is essential to select people who have the necessary mental and physical qualities. Follow the ITSDf B56.1. In OSHA 1910.178, employers are advised of their duty to train operators in the safe operation of the powered industrial trucks. Operators must be trained on the equipment they will use and in the environment they will operate. The training program should specifically address hazards in your workplace. Both new and experienced operators should participate in your training program. Include an evaluation process to make sure

operators have acquired the knowledge, skill and understanding they need to operate your equipment safely. Retrain and evaluate all operators regularly to be sure they continue to follow safe material handling procedures. Annual evaluations may be required by Federal OSHA, each state or province may vary.

**Evaluate your operation and make any changes necessary to provide a safe material handling environment.** You may need help finding ways to make your facilities, equipment, maintenance procedures or material handling procedures safer. Your CLARK dealer may have some suggestions. Be sure to check OSHA 1910.178 and ITSDf B56.1 for basic requirements, and review state, provincial and local guidelines. Another good source of information is the National Safety Council (NSC). The NSC has individuals who can discuss your safety needs with you, and offers many helpful publications. There may also be safety consultants in your area who can give you specific recommendations.

One of the most important ways to improve safety is to separate pedestrian and lift truck traffic by establishing traffic rules and installing railings and marked aisle ways. If you can't separate pedestrian and lift truck traffic, or there are other dangerous aspects of the work environment that you decide can't be changed, discuss the alternatives with a safety consultant, and provide training on lift truck safety and potential hazards for pedestrians working around lift trucks. You should also establish your own work rules for lift truck operators and enforce them with effective supervision. No one knows more about the hazards that might be present in your operation than you do. If you can't eliminate hazards by changing the equipment or procedures, you must establish work rules to avoid safety problems. Your workers will become more safety conscious if you emphasize your safety rules during training and if supervisors expect the rules to be followed at all times.

If you decide additional equipment would be an effective part of your safety program, talk to your CLARK dealer. CLARK offers high quality, dependable parts to help you customize your trucks to meet the safety needs of your business. Specialized parts are available factory installed on new trucks, or you can have your local dealer install additional parts on the trucks you already have.

For more information about your responsibility in starting an effective safety program, ask your CLARK dealer for a copy of the Employers Guide to Material Handling Safety. Part # 59-886-0410.





# Customizing your Lift Truck

**When customizing your lift truck, you should carefully consider which device or combination will work best as part of your specific plant safety program.**

Answering these questions may help you choose equipment that does what you need.

**Are your lift trucks equipped with safety items such as warning labels, load backrests, overheard guards and operator restraints?**

**Can an alarm or light signal be easily noticed without being a distraction to the operator or other workers?**

**Will a light or alarm signal be similar to warning devices already in use?**

**Do the colors of your mobile equipment stand out from the background colors?**

**Are your lift trucks operated in flammable environments where special trucks (GS, LPS, DS, EE) and fire extinguishers should be used?**

**Will a mirror improve the operators ability to see an area which is hard to see under normal operating conditions?**

**Do your vehicles operate in a low light area where headlights or backup lights could help?**

**Do you have special product applications that require customized handling equipment such as clamps or rotators?**

**If several trucks are operated in the same area, will stop and tail lights help operators see that another truck is slowing down or stopped?**

Whatever safety device you choose, your operators must know what its for and how it works. Still, operators must continue to use extreme caution when working near pedestrians. Employees, customers or visitors who are allowed near operating trucks must know what the signal is, what it means, and how to respond.

Remember that specialized safety equipment, if you choose to install it, is still only part of the solution. An overall safety program includes understanding and following all regulations, establishing an operator selection and training program, enforcing your work rules through effective supervision, and evaluation of your operation to find ways your facilities, equipment, maintenance procedures, and material handling procedures can be made safer.

## What Equipment is Right for Your Operation?

### Flashing Lights

Flashing lights may be an effective visual signal of an approaching lift truck where there are several lift trucks operating, or where pedestrians must cross or walk along the same aisle as lift trucks.

### Strobe Lights

Strobe lights generally provide a brighter, more intense flash of light than either flashing or revolving lights. They are usually more visible under bright or natural light. They are often used in outdoor applications to signal other operators and pedestrians of an approaching truck.

### Blue Spot Light

12-48V LED spot light. Bright blue beam pattern projects onto the ground and provides visual warning for pedestrians. Rugged solid state and long lasting LEDs can withstand shock and vibration meaning never having to replace another bulb. Tough polycarbonate housing prevents rust and corrosion. This light is very energy efficient and is also available in 12-48 V.

### Back-Up Lights

Back-up lights may signal other operators and pedestrians that a lift truck is moving in reverse. They also improve operator visibility while backing up in low light conditions.

### Headlights

One or two headlights may improve visibility when operating inside a trailer or rail car, or other dimly lit areas. Headlights may also help signal other operators and pedestrians of an approaching lift truck. Headlights may also be mounted on the rear of the truck to improve the operators view of the path of travel when backing up in low light areas.

### Stop and Tail Lights

Stop and tail lights may be helpful in multiple vehicle traffic areas to signal other operators and pedestrians that the lift truck is braking to slow down or stop.

### Turn Indicators

Turn indicators may be helpful in alerting approaching or following vehicle traffic, or pedestrians, that the lift truck is about to turn.

### Fire Extinguishers

Fire extinguishers can be mounted on the lift truck. There are fire extinguishers for paper, wood and trash fires, as well as for flammable liquid and electrical equipment fires.

### Mirrors

Mirrors may give the operator an improved view of the area surrounding the lift truck when normal operating vision is otherwise obstructed. They are typically installed on trucks with cabs. The operator should never use a mirror to replace actually looking in the direction of travel.

### Paint

The standard CLARK truck colors are high-visibility green chassis with low-glare matte black uprights and overhead guards. Safety yellow and bright orange are also available.



# Keeping Safety Equipment Updated

## Audible Alarms

If the operators view is restricted, an audible alarm may warn pedestrians that the truck is moving. Audible alarms can be installed to sound whenever the truck is moving in reverse, forward, or both directions. Fixed-decibel alarms may be used in light to medium noise level environments. Variable-decibel alarms automatically adjust their volume up or down to stay a certain number of decibels above the surrounding noise level. Several models are available for different noise level environments.

**\*\* Mounting location also affects the end result of utilizing and audible alarm.**

## Required Safety Equipment

Load backrests, overhead guards, capacity plates, fork retaining pins and horns are required safety equipment for most trucks. Have your CLARK dealer install them if they are damaged or missing.

## Operator Restraint System

In a lateral tip over of a sit-down lift truck, operators may have a better chance for survival if they stay with the truck. If your sit-down lift trucks don't have operator restraint systems, contact your local dealer about installation.

## Personal Fall Protection Systems

Order Selectors or Orderpickers (also called Operator-up high lift trucks) are designed to lift the Operator on an elevating platform. When operating this type of lift truck the Operator is required to utilize a Personal Fall Protection System as specified in Table 1 of ANSI/ITSDF B56.1 Safety Standard for Low Lift and High Lift Trucks which is shown below. The Lanyard (Energy Absorber

or Self retracting) attaches to the Body Belt or Body Harness and hooks to the Overhead Guard. The appropriate Personal Fall Protection System that is required for the Operator must be worn to prevent serious injury in a fall.

## Operators Manual

The operators manual should always be attached to the truck so the operator can refer to it easily. If your operators manuals are damaged or missing, get replacements through your CLARK dealer.

## Warning Labels

Warning labels are important safety equipment for your trucks. OSHA requires that labels be kept up to date and in good, legible condition. If labels are damaged or missing, replace them with new labels ordered from your CLARK dealer.

## Decibel Levels of Typical Noise Sources and Permissible Duration of Exposure

If you decide to install audible alarms, make sure that all your mobile equipment has the same alarm, and don't install the same alarm on other applications such as on production equipment.

*The chart on the right gives some decibel levels for typical environments, as well as exposure limits for various noise levels. If you are considering installing audible alarms, be sure to have the ambient noise level of your operation measured. You need to know the ambient noise level to choose an alarm with a high enough decibel output to be heard above the surrounding noise. You also must find out the actual noise level operators are exposed to, including the noise produced by the audible alarm if one is installed. If the noise level is too high for the length of time your operators are exposed, you will need to provide an adequate form of hearing protection. Refer to state and local regulations and to OSHA Standard 1910.95 for further information about permissible noise exposures.*

**Table 1(a) Personal Fall Protection System Configurations (pounds)**

Fall Protection / Prevention Device	Operator Weight (lbs.)					
	<220	220 - 310 <sup>1)</sup>	311 - 400 <sup>1)</sup>	>400 <sup>1)</sup>		
Body Belt	X					Contact Truck Manufacturer
Full Body Harness		X	X	X	X	
Energy Absorber - max total length (6ft.)			X			
Self Retracting Lanyard	X	X			X <sup>2)</sup>	
Maximum Arresting Force Permitted (lbs.)	900	1800	1800	1800	1800	

1) Truck Capacity shall be reduced by the operator(s) weight in excess of 220 lbs.

2) Self Retracting Lanyard - shall be rated for the operator's weight. Contact Truck Manufacturer.

**Table 1(b) Personal Fall Protection System Configurations (kilograms)**

Fall Protection / Prevention Device	Operator Weight (kg)					
	<100	100 - 140 <sup>1)</sup>	141-181 <sup>1)</sup>	>181 <sup>1)</sup>		
Body Belt	X					Contact Truck Manufacturer
Full Body Harness		X	X	X	X	
Energy Absorber - max total length (1820 mm)			X	X		
Self Retracting Lanyard	X	X			X <sup>2)</sup>	
Maximum Arresting Force Permitted (N)	4000	8000	8000	8000	8000	

1) Truck Capacity shall be reduced by the operator(s) weight in excess of 100 kg.

2) Self Retracting Lanyard - shall be rated for the operator's weight. Contact Truck Manufacturer.



# Auxiliary Lighting



**1830017**

## Par 36 Steel Work Lights

Part Number	Bulb	Volt	Mounting Bracket	Description
1830017	877752	12	336570	including switch, bracket and guard
1721777	877752	12	336570	with guard
1800234	877752	12	N/A	including switch, no guard
1742897	877752	24	336570	with guard
1830018	883819	24	336570	including switch, bracket and guard
1830019	994471	36	336570	including switch, bracket and guard
1830424	997100	48	336570	with guard
2755767	997100	48		



**920931**

## Par 36 Heavy Duty Work Lights

Part Number	Bulb	Volt	Mounting Bracket	Description
936604	883819	36	336570	with switch and guard
1804470	877752	12	336570	with switch and guard
1804471	877752	12	336570	with guard
677744	877752	12	N/A	with mtg bracket
2820537	928822	12-24	N/A	with mtg bracket
936005	883819	24	336570	with switch and guard
1820712	883819	24	336570	with guard
1804472	994471	36	336570	with switch and guard
1804473	994471	36	336570	with guard



**2390069**

## Par 36 Rubber Cased Lamps

Part Number	Bulb	Volt	Guard	Description
2390069	877752	12	909864	with guard
2399862	883819	24	909864	with electrical connectors
2396909	994471	36	909864	with guard and electrical connectors



**7000135**

## Par 36 Rubber Cased Lamp Kit

Part Number	Bulb	Volt	Description
7000135	997100	48	with guard, bracket connectors, & hardware

**TOTALIFT®**



# Auxiliary Lighting



2794318

## 3 x 5 Lamps

Part Number	Bulb	Volt	Mounting Bracket	Description
2794318	923174	12	2808434	clear lens - self grounding Model 852
2794538	923174	12	2808434	clear lens w/ connectors - self grounding Model 852
2793002	923174	12	2808434	clear lens with connectors Model 850
1805673	2818433	48	2808434	Model 850
1805672	2813432	36	2808434	Model 850
1805674	898731	12	2808434	Model 850
8074226	1243364	24	N/A	Interior Lamp

## Replacement Parts & Accessories

Lens Color		
Clear	Red	Clear Trapezoid
918440	918438	918862



2802436

## 3 x 5 Lamps

Part Number	Bulb	Volt	Mounting Bracket	Description
2802436	923174	12	2808434	for vertical mounting Halogen

## Replacement Parts & Accessories

Lens Color		
Clear	Red	Clear Trapezoid
918440	918438	918862



2820537

## 3 x 5 Lamps

Part Number	Bulb	Volt	Mounting Bracket	Description
2820537	928822	12	N/A	w/mtg bracket
8047302	1239893	24	N/A	w/mtg bracket



3785235

## 3 x 5 Lamps

Part Number	Bulb	Volt	Mounting Bracket	Description
3785235	N/A	12.8	N/A	Watt Halogen
2776890	916564	12.8	N/A	Watt Halogen

## Work Lamp On/Off Switches

Part Number
707688
906805



DWD147681

## 3 x 5 Lamps

Part Number	Volt
DWD147681	12

**TOTALIFT**



# Auxiliary Lighting



1809666

## 3 x 5 Oval LED Safety Blue Light

Part Number	Bracket	Volt	Wire Harness
1809666	8001647	12-48	7009952
2831373	N/A	12-48	Included

## 3 x 5 Oval LED Safety Value Blue/Red Light

Part Number	Bracket	Volt	Wire Harness
1809719	N/A	12-48	Included
1809913	N/A	12-48	Included



2827443

## 3 x 3 Lamps

Part Number	Bulb	Volt	Guard
2827443	935617	12	8037167



1809719



1809913



933981

## 5 Round Lamps

Part Number	Bulb	Volt	Guard
933981	N/A *	12V	0727030

\* Bulb replacement is not recommended due to the high risk of breakage. CLARK will not be liable for any damages resulting from attempting to replace this bulb.

# TOTALIFT®



448081

## 4 x 3.5 Lamps

Part Number

448081



448355

## 4 Round Lamps

Part Number

448355

# Sealed Beam



Par46



Par36



Screw



Slip-on



2 Lugs

CLARK #	Mfg #	Volt	Watts	Size	Terminal Type
997100	4340	48	80	PAR36 Trap	Slip On
994471	4350	36	60	PAR36 Trap	Slip On
910772	4406	12.8	35	PAR36	Screw
877752	4411	12.8	35	PAR36 Trap	Screw
891892	4422	12.8	35	PAR36	Screw
551242	4478	13	60	PAR46	2 Lugs
883819	4589	24	50	PAR36	Slip On
897074	4440X	12.8	40	PAR36	Slip On
895958	4603X	12.8	35	PAR 36	Screw
913129	H7604	12.8	50	PAR36 Halogen	Screw
913127	H7606	12.8	50	PAR36 Halogen	Screw
913128	H7610	12.8	50	PAR36 Halogen	Screw



# LED Work/Stop/Strobe Lights



2829841

2829674



1809912

1809911



933812



7005719



18077013

2831369



1807716

## LED Headlamps/Worklights

Part Number	Volt	Description
2829841	12-48	HORIZONTAL MOUNT OVAL 700
1813481	12-48	HEADLIGHT CONVERSION KIT
1813482	12-48	HEADLIGHT CONVERSION KIT
1813483	12-48	HEADLIGHT CONVERSION KIT
2828057	12-48	HEADLIGHT CONVERSION KIT
1813484	12-48	REAR LIGHT CONVERSION KIT
8096274	12-48	REAR LIGHT CONVERSION KIT
2831566	12-48	VERTICAL HEADLIGHT
1809912	12-48	VERTICAL HEADLIGHT
1809911	12-48	VERTICAL HEADLIGHT

### If Needed

2789289	CONNECTOR
8047202	HARNESS

## LED Headlamps/Worklights

Part Number	Volt	Description
2829674	12-48	VERTICAL MOUNT OVAL 701

## LED Stop/Tail

Part Number	Volt	Description
933812	24-48	
935855	12	
1809077	12-24	4.5 Round

## LED Stop, Tail, & Turn

Part Number	Volt	Description
7005719	12	2 x 9 Rectangular

## LED Strobes

Part Number	Color	Volt	Description
1807713	AMBER	12-80	5 LED 60+6 quad fpm 5.16 X 2.38
1807714	BLUE	12-80	5 LED 60+6 quad fpm 5.16 X 2.38
1807715	RED	12-80	5 LED 60+6 quad fpm 5.16 X 2.38
2831369	AMBER	12-80	5 LED 60+6 quad fpm 5.16 X 2.38
2831370	BLUE	12-80	5 LED 60+6 quad fpm 5.16 X 2.38
2831371	RED	12-80	5 LED 60+6 quad fpm 5.16 X 2.38

## LED Strobes

Part Number	Color	Volt	Description
1807716	AMBER	12-72	55 LED 3.63 X 3.54
1807717	BLUE	12-72	55 LED 3.63 X 3.54
1807718	RED	12-72	55 LED 3.63 X 3.54



# Strobe Lights



8070877

## Complete Assembly

Part Number	Color	Volts
8070877	BLUE	12-24
8070876	RED	12-24
8070878	AMBER	12-24

## Replacement Parts & Accessories

Amber	Red	Lens Color			Clear	Bulb/ Flashtube	Guard	Mounting Bracket
		Blue	Green					
8070883	8070881	8070882	N/A		N/A	1244606	N/A	N/A



1805392

## Complete Assembly

Part Number	Color	Volts
1809340	AMBER	12-72
1809341	RED	12-72

## Replacement Parts & Accessories

Amber	Red	Lens Color			Clear	Bulb/ Flashtube	Guard	Mounting Bracket
		Blue	Green					
1805315	1805316	1805317	1805319		1805318	1805320	1805321	1805325



1805307

## Complete Assembly

Part Number	Color	Volts
1805307	AMBER	12-72
1805399	BLUE	12-72

## Replacement Parts & Accessories

Amber	Red	Lens Color			Clear	Bulb/ Flashtube	Guard	Mounting Bracket
		Blue	Green					
1805308	1805309	1805310	N/A		N/A	1805312	2760704	N/A



1805744

## Complete Assembly

Part Number	Color	Volts
1805744	AMBER	12-48
1805745	RED	12-48

## Replacement Parts & Accessories

Amber	Red	Lens Color			Clear	Bulb/ Flashtube	Guard	Mounting Bracket
		Blue	Green					
906465	906466	N/A	N/A		N/A	906464	2760704	N/A



# Strobe Lights



1805394



1805298



1805299

## Complete Assembly

Part Number	Color	Volts	Description
1805394	AMBER	12-80	Strobe 2 Joule
1805395	BLUE	12-80	Strobe 2 Joule
1805396	RED	12-80	Strobe 2 Joule

## Replacement Parts & Accessories

Amber	Red	Lens Color			Bulb/ Flashtube	Mounting Bracket
		Blue	Green	Clear		
1805289	1805290	1805291	1805292	1805293	1805294	1805324

## Complete Assembly

Part Number	Color	Volts	Description
1805298	AMBER	12-72	Strobe 5 Joule

## Replacement Parts & Accessories

Amber	Red	Lens Color			Bulb/ Flashtube	Mounting Bracket
		Blue	Green	Clear		
1805289	1805290	1805291	1805292	1805293	1805294	1805324

## Complete Assembly

Part Number	Color	Volts	Description
1805299	AMBER	12-72	25 Strobe 3 Joule

## Replacement Parts & Accessories

Amber	Red	Lens Color			Bulb/ Flashtube	Guard	Mounting Bracket
		Blue	Green	Clear			
1805301	1805302	1805303	1805304	N/A	1805320	N/A	N/A

# Turn Signals



8029013



2793031



8029014



444962

Part Number	Bulb	Volt	Description	Lens Color	
				Amber	Red
8029013	925518	12	3 x 3	930737	930736
2793031	898732	12	3 x 5	N/A	
8029014	8029026	12	2 x 4	N/A	
8049134	898732	12	2 x 4	N/A	
8046570	1239894	24	2 x 4	N/A	
8001693	904734	12	Oval	N/A	

Part Number	Bulb	Volt	Description	Lens Color	
				Amber	Red
HY865683	898731	12	3 x 7	N/A	
444962					

**TOTALIFT**



# Stop/Tail/Turn Lights



2802634



2821200



2813430



3658402



8001591



8041022



925516



926707

## Combination Lights

Part Number	Volt	Amber	Lens Color Red	Clear	Amber	Bulb Red	Clear
2802634	12	921566	921568	921567	921569	898732	921569

Part Number	Volt	Amber	Lens Color Red	Clear	Amber	Bulb Red	Clear
2821200	12	924396	921568	921567	2821201		898731

Part Number	Volt	Amber	Lens Color Red	Clear	Amber	Bulb Red	Clear
2813430	36	924396	921568	921567	2813434	2813432	2813434
2813431	48	924396	921568	921567	2813435	2813433	2813435

Part Number	Volt	Amber	Lens Color Red	Clear	Amber	Bulb Red	Clear
3658402	24	N/A	N/A	N/A	3658352	3658352	3658351

Part Number	Volt	Amber	Lens Color Red	Clear	Amber	Bulb Red	Clear
8001591	12	N/A	N/A	N/A	904994	925517	925518

Part Number	Volt	Amber	Lens Color Red	Clear	Amber	Bulb Red	Clear
8041022	12	N/A	N/A	N/A	1239894	1239896	N/A

Part Number	Volt	Amber	Lens Color Red	Clear	Amber	Bulb Red	Clear
925516	12	929406	929405	N/A	N/A	925517	925518

Part Number	Volt	Amber	Lens Color Red	Clear	Amber	Bulb Red	Clear
926707	12	933001	933001	N/A	N/A	925517	925518
925519	12	933001	933001	N/A	N/A	925517	925518
926710	12	933001	933001	N/A	N/A	925517	925518

**TOTALIFT**



448080 - 12V



444961 - 12V



448417 - 12V



448430 - 12V



444958

Part Number	Volt	Amber	Lens Color Red	Clear	Amber	Bulb Red	Clear
444958	12	N/A	N/A	N/A	898731	898732	925518



# Stop/Tail/Backup Lights



2390070

## Stop/Tail Lights

Part Number	Bulb	Volt	Lens
2390070	898732	12	915212



2792989

## Stop/Tail Lights

Part Number	Bulb	Volt	Lens	Description
2792989	N/A	12	N/A	SEALED POLYCARBONATE



2794319

## Stop/Tail Lights

Part Number	Bulb	Volt	Lens
2794319	N/A		N/A



1306620

## Stop/Tail Lights

Part Number	Bulb	Volt	Lens
1306620	880690	12	893517

# Interior Lights



8043798



8040749



926564



2809013

## Interior Lights

Part Number	Volt	Description
8043798	24	LIGHT DOME
8060325	12	LIGHT DOME
926564	12	LIGHT DOME
8040749	12	LIGHT DOME
2809013	12	LIGHT DOME
8081370	12	INTERIOR LAMP



# Bulb Reference Chart

Part Number	Industry # or P/N & Manf.	Voltage	Watts	Filament	Bulb	Base
444122	37	14V	1.26	S-2/S-6	T1-3/4	Wedge
943219	53	14V	1.73	C-2V	G3-1/2	Min Bayonet
733626	57	14V	3.36	C-2V	G4-1/2	Min Bayonet
733626	57X	14V	3.36	C-2V	G4-1/2	Min Bayonet
925518	67	13.5V	7.96	C-2R	G-6	SC Bayonet
876574	68	13.5V	7.97	C-2R	G-6	DC Bayonet
2821201	93	12.8V	13.30	C-6	S-8	SC Bayonet
936564	97	13.5V	9.32	C-2V	G-6	SC Bayonet
2370868	158	14V	3.36	C-2V	T3-1/4	Wedge
444524	257	14V	3.78	C-2R	G4-1/2	Min Bayonet
449663	293	14V	4.62	C-2F	G4-1/2	Min Bayonet
7000112	311	24V	36.12	C-2V	S-11	SC Bayonet
898237	312	28V	36.10	C-2V	S-11	DC Bayonet
7000123	315	28V	25.20	C-2V	S-8	SC Bayonet
991176	336	14V	1.12	C-2F	T1-3/4	Midget Grooved
444083	386	14V	1.12	C-2F	T1-3/4	Midget Grooved
7000119	387	28V	11.20	C-2F	T1-3/4	SC Midget Flanged
449695	456	28V	4.76	C-2F	G4-1/2	Min Bayonet
449700	791	14V	35.00	C-6	T2-3/4	G-4 Two Pin
449701	795	12.8V	50.00	C-6	T-4	SC Bayonet
923174	862	12.8V	37.50	C-6	T3-1/4	Halogen Right Angle Prefocus
27539-008	1003	12.8V	12.00	C-6	B-6	SC Bayonet
925517	1016	12.8V	17.2/8.26	C-6	S-8	DC Bayonet
942746	1034	12.8V	23/8.26	C-6	S-8	DC Index
994503	1062	40V	36.80	C-6	RP-11	DC Bayonet
4152372	1073	12.8V	23.00	C-6	S-8	SC Bayonet
904994	1076	12.8V	23.00	C-6	S-8	DC Bayonet
921569	1141	12.8V	18.43	C-6	S-8	SC Bayonet
893742	1142	12.8V	18.40	C-6	S-8	DC Bayonet
898731	1156	12.8V	26.88	C-6	S	SC Bayonet
898732	1157	12.8V	26.9/8.26	C-6	S-8	DC Index
8029026	1159	12.8V	20.48	C-6	S-8	SC Bayonet
880690	1176	12.8V	17.2/8.26	C6	S-8	DC Bayonet
797413	1195	12.5V	37.50	C-2R	RP-11	SC Bayonet
897146	1196	12.5V	37.50	C-2R	RP-11	DC Bayonet
7000118	1228	32V	14.40	C-2V	S-8	DC Bayonet
907924	1229	40V	15.20	C-2V	S-8	DC Bayonet
443958	1638	28V	28.56	2C-6	S-8	DC Bayonet
1620699	1662	28V	26.00/9.50	CC-6/C-2V	S-8	DC Index
1243364	1683	28V	28.00	2C-6	S-8	SC Bayonet
032-203	1820	28V	2.50	C-2F	T3-1/4	Min Bayonet



# Bulb Reference Chart

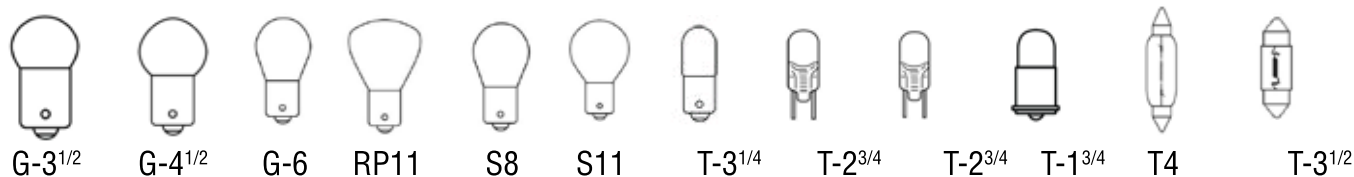
Part Number	Industry # or P/N & Manf.	Voltage	Watts	Filament	Bulb	Base
905513	1828	37.5V	1.88	C-2F	T3-1/4	Min Bayonet
961458	1864	28V	4.76	C-2F	T3-1/4	Min Bayonet
775735	1891	14V	3.36	C-2F	T3-1/4	Min Bayonet
908208	1893	14V	4.62	C-2F	T3-1/4	Min Bayonet
449717	1895	14V	3.78	C-2F	G4-1/2	Min Bayonet
912708	2057	14V	6.72	C-6/C-6	S-8	DC Index
449678	3898	12V	2.00	C-2V	T-2	BA7s
904734	6461	12.8V	10.00	C-8	T-10	S8.5/8.5
1239895	7528	24V	25.00/10.00	C-6/C-6	S-8	DC Bayonet
448442	10857	36V	25.00/10.00	S-2/S-2	S-8	DC Index
929459	Hella H83205021	12V	15.00	C-8	T4-5/8	SV8.5-8
7004476	A5679B	12V	45.00	C-2V	RP-11	DC Prefocus
445333	CE1	36V	10.00	C-2V	G-6	SC Bayonet
7000144	A4896	48V	2.50	S-2/S-2	S-8	DC Index
448424	CE17	36V	40.00	C-2V	RP-11	DC Bayonet
921702	Datcon - 71708-02					
1803648	ECCO - R6200FT					
934466	Electronic Controls - R3000B1 I					
7000145	H3 - 35W	12V	35.00	CC6	T3-1/4	PK22s
935617	H3 - DMK 55W	12V	55.00	C6	T3-1/4	PK22s
916564	H3 - Philips 55W	12V	55.00	C6	T3-1/4	PK22s
1239893	H4-H83140211	24V	75.00/70.00	C6	T4-3/4	P43T
3658351	N.A.	24V	5.00			
3777902	Hella - 8GP-002095-241					
3777905	Hella - 78145	24V	10.00			
3658352	Hella H83205051	24V	18.00	C-8	T4-5/8	SV8.5-8
918935	Maxima - 71224-03					
911351	MILL - 5001					
445331	N.A.	24V	25.00			
445332	N.A.	48V	10.00	C-2V	G-6	SC Bayonet
446280	N.A.	48V				
447356	N.A.	24V	25.00/10.00	C-6/C-6	S-8	DC Index
448085	N.A.	24V	60.00	C-6	S-11	SC Bayonet
449689	N.A.	24	5.00	2-C6	S-8	DC Index
79413	N.A.	12V		C-2V	RP-11	SC Bayonet
7000125	N.A.	48V	25.00	C-2Vsup	S-8	SC Bayonet
7000143	N.A.	36V	25.00	C-2Vsup	S-8	DC Index
448443	N.A.	48V	30.00	C-6	RP-11	DC Prefocus
448452	N.A.	48V	40.00	C-6	S-11	DC Index
449682	N.A.	24V	60.00	C-6	S-11	SC Bayonet
2376819	Nartron - 3183	12V	36.00	C-2V sup	S-8	DC Bayonet
928821	Philips - 483075-1					



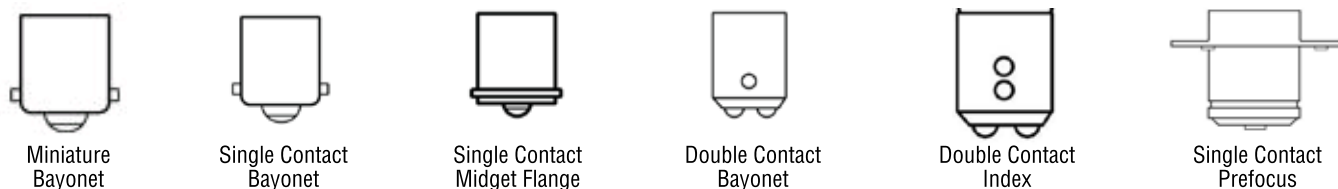
# Bulb Reference Chart

Part Number	Industry # or P/N & Manf.	Voltage	Watts	Filament	Bulb	Base
928822	Philips - 4831091					
933474	Philips - 4831190					
991039	SP1	36V		C-2V sup	S-8	DC Bayonet
2813434	SP14	36V	26.9/9.50	C-2V sup	S-8	SC Bayonet
2813435	SP15	50V	10.00	C-2V sup	S-8	SC Bayonet
916259	SP2	48V	12.00	C-2V sup	S-8	DC Bayonet
915038	SP5	36V	30.00	C-2V sup	S-8	DC Bayonet
916260	SP6	48V	36.00	C-2V sup	S-8	DC Bayonet
2813432	SP7	36V	27.40	C-2V sup	S-8	SC Bayonet
2813433	SP8	48V	25.00	C-2V sup	S-8	SC Bayonet
906464	JW Speaker - 3148681					
915037	JW Speaker - 4800411	28V	28.56	2-C6	S-8	DC Bayonet
896826	JW Speaker - 4803380	14V	3.78	C-2F	G4-1/2	Min Bayonet
914685	Sprague - 904.404	12V				
2779731	TELEMECANIQUE - DL1-BA024	24V	4.00			
994504	Trilite - 30S11					

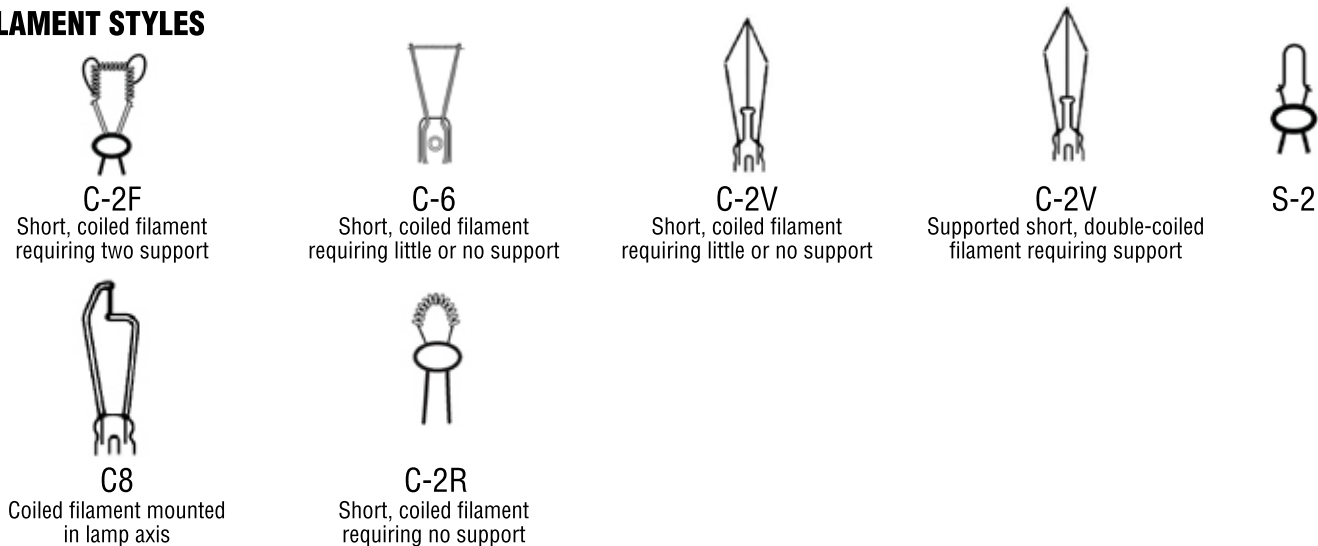
## BULB STYLES



## BASE STYLES



## FILAMENT STYLES





# SAFETY

ASK YOUR LOCAL CLARK DEALER  
ABOUT THE TOTALIFT LINE OF  
SAFETY EQUIPMENT AND ACCESSORIES



[CLARKMHC.com/parts](http://CLARKMHC.com/parts)  
[CLARKMHC.com/dealers](http://CLARKMHC.com/dealers)



And like us on  
[FACEBOOK.COM/CLARKMHCNA](https://www.facebook.com/CLARKMHCNA)

CLARK® and TOTALIFT® are registered trademarks of CLARK Material Handling Company.  
©2015 CLARK Material Handling Company.



# Rain Caps & Shields

## TOTALIFT RAIN CAP



### Tinted Rain Caps

Part No.	Description	Width x Length	Stock/Non Stock
1807047T	RAIN CAP TINTED	42 x 45.5	Non-Stock
1808715T	RAIN CAP TINTED	35 x 43.5	Non-Stock
1808716T	RAIN CAP TINTED	39 x 52	Stock
1808717T	RAIN CAP TINTED	36 x 38.5	Non-Stock
1808790T	RAIN CAP TINTED	42 x 42	Non-Stock
1809096T	RAIN CAP TINTED	35 x 38.5	Non-Stock
1809174T	RAIN CAP TINTED	44.5 x 51.5	Non-Stock
1809367T	RAIN CAP TINTED	33 x 43.5	Non-Stock
2826859T	RAIN CAP TINTED	39 x 43.5	Stock
2826861T	RAIN CAP TINTED	37 x 43.5	Non-Stock
2826862T	RAIN CAP TINTED	39 x 38.5	Non-Stock
2826903T	RAIN CAP TINTED	48 x 44.5	Non-Stock
2826904T	RAIN CAP TINTED	52.5 x 44.5	Stock
7005358T	RAIN CAP TINTED	31 x 43.5	Non-Stock
7005359T	RAIN CAP TINTED	31 x 38.5	Non-Stock

### Rain Caps

Part No.	Description	Width x Length	Stock/Non Stock
1807047	RAIN CAP	42 x 45.5	Stock
1808715	RAIN CAP	35 x 43.5	Non-Stock
1808716	RAIN CAP	39 x 52	Stock
1808717	RAIN CAP	36 x 38.5	Non-Stock
1808790	RAIN CAP	42 x 42	Stock
1809096	RAIN CAP	35 x 38.5	Non-Stock
1809174	RAIN CAP	44.5 x 51.5	Non-Stock
1809367	RAIN CAP	33 x 43.5	Non-Stock
2826859	RAIN CAP	39 x 43.5	Stock
2826861	RAIN CAP	37 x 43.5	Stock
2826862	RAIN CAP	39 x 38.5	Stock
2826903	RAIN CAP	48 x 44.5	Stock
2826904	RAIN CAP	52.5 x 44.5	Stock
7005358	RAIN CAP	31 x 43.5	Non-Stock
7005359	RAIN CAP	31 x 38.5	Non-Stock

### Features

The domed cover with channels and gutters helps eliminate cascading water.  
This alternative to shrink-wrap, plywood & cardboard provides greater comfort & safety.  
Easy installation and removal.  
Made of non-yellowing polycarbonate plastic.  
Adds 3.5 to the height of the overhead guard.

OSHA standard 1917.43(e) (1) (ii) clearly states, overhead guards shall not obstruct the operators view



7005213



7005211



7005210

### Storage Cover

Part Number	Description
7005213	Fits up to 10,000 lb forklift

### Cab Enclosures

Part Number	Description
7005211	Fits up to 6000 lb forklift
7005212	Fits up to 12,000 lb forklift

### Universal Overhead Shield

Part Number	Description
7005209	Clear Windshield & Canopy
7005210	Tinted Overhead Canopy
Measurement Details: 40 L x 46 W	

### Features

Protection from debris, rain & sun.  
Attaches to lift in seconds.  
Clear overhead shield can also be used as a windshield.





1831144



445548



1809001



1809002

## Mirrors

Part Number	Size/Shape	Mounting
1831144	5 Flat Round	Bracket Included
2368943	5 Flat Round	Bracket*
446283	8 1/2 Round	Bracket*

### Mirror Universal Bracket

2368942

### Features

Helps eliminate dangerous blind spots when driving forklifts.  
For indoor and outdoor use.  
Adjusts to any position or angle.  
Easy to install universal mounting bracket.

\*Bracket not Included

## Mirrors

Part Number	Size/Shape	Mounting
1805682	3 3/4 Flat	Magnetic
445548	3 7/8 X 6 1/4 Flat	Bracket*
926377	4 1/2 X 7 1/4 Convex	Bracket*
925590	4 1/2 X 7 1/2 Flat	Bracket*
1820077	4 7/8 X 8 Flat	Bracket*
1832491	5 1/2 X 7 1/2 Convex	Bracket*
8049165	5 1/2 X 10 Flat Rear	Bracket*
1805681	6 Flat	Magnetic
8032046	6 1/2 X 10 Flat Rear	Bracket*
8044861	7 1/2 X 13 Flat Rear	Bracket*

### Mirror Universal Bracket

2368942

### Features

Helps eliminate dangerous blind spots when driving forklifts.  
For indoor and outdoor use.  
Adjusts to any position or angle.  
Easy to install universal mounting bracket.

\*Bracket not Included

## Dome Mirrors

Part Number	Size/Shape	Mounting
1809001	9 Dome	Tape
1809002	9 Dome	Magnetic

### Features

Complete 180 degree view.  
Increases operator visibility.  
Easy to install.



# Alarms/Horns



2744507



949865



916547



926715



8069420



8026892

## Smart Alarms

Part Number	Volt	Decibels
2744507	12-48	82 to 107 dBA
913641	12-24	82 to 107 dBA
916842	12-48	77 to 97 dBA
1832485	12-48	77 to 97 dBA Kit

### Features

Compact and rugged design for medium noise environment.  
Sealed in epoxy against dust, moisture and vibration.  
Steel housing and rugged construction for demanding applications.

## Adjustable Setting Alarms

Part Number	Volt	Decibels
949865	12-36	97 to 112 dBA
910762	12-36	87 to 107 dBA

### Features

Meets SAE J994.  
Decibels are user selected at time of installation.  
Steel housing and construction for rugged applications.  
Integral bracket includes same mounting pattern popular with OEMs.  
Reverse mounted speaker enhances sound and protects speaker for longer life.

## Single Setting Alarms

Part Number	Volt	Decibels
916547	12-48	97 dBA
926715	12	100 dBA
914772	12-24	102 dBA
1801478	12-80	87 dBA
913640	12-24	87 dBA
8069419	12	97 dBA
8069420	24	97 dBA
8026892	12	95 dBA
8044836	12	85 dBA

### Features

Compact size and universal mounting maximize location options.  
ECCO reliability in a cost-effective back-up alarm.  
Reverse polarity protected.  
Self-grounding: no grounding wire needed for installation.  
Steam cleanable and pressure washable.  
UL Approved: Recognized under the Component Program of Underwriters Laboratories, Inc. for battery powered industrial truck accessories.  
Voltage spike and surge protected.



# Alarms/Horns



2792175



913972



935199



2823277



2393154



922126

## Horns

Part Number	Volt	Decibels	# of Terminals
2792175	12-48	107 dBA	3

### Features

A solid state electronic horn designed for long life. Replaces high-maintenance electro-mechanical horns. For long life and replaces high-maintenance electro-mechanical horns. This model is designed to meet or exceed all applicable SAE specifications. Used by major OEMs. Weight: 13.6 oz. (386 g).

## Horns

Part Number	Volt	Decibels	# of Terminals
1830006	12	110 dBA	1
8081948	12	110 dBA	2

### Loud One - Low Tone - Fits all 12v vehicles

913972	12	112 dBA	2
913973	24	112 dBA	2

### Prime Mover / Raymond Muscatine

2393154	12	115 dBA	2
2394923	36-48	115 dBA	2
2752181	36-48	115 dBA	2

### Extra Loud - Beep Beep Electric Horn

935199	24		
--------	----	--	--

### Adjustable Sound Level Horn

## Horns

Part Number	Volt	Decibels	# of Terminals
2823277	12	118 dBA	2
2823514	12	118 dBA Kit	2

### Low Tone Electromagnetic Small Disc Horn w/ Special L-Bracket

## Buzzers

Part Number	Volt	Decibels	# of Terminals
922126	12	118 dBA	2
910605	12	118 dBA Kit	4
2351239	12	80 dBA	2
8001848	12	80 dBA	2



# Seat Belts



2786748



2386249



1806897



1807736

## Seat Belts

Part Number	Description
2819929	BLACK 48 NON CINCHING
2786748	BLACK 50 RETRACTABLE
HY1374750	BLACK 56 RETRACTABLE
1806897	ORANGE 50 RETRACTABLE
909692	BLACK 48 NON RETRACTABLE
2386249	BLACK 60 NON RETRACTABLE
2820542	BLACK 70 NON RETRACTABLE
1808772	ORANGE 70 w/ switch NON RETRACTABLE

## Features

Safety orange and green colored webbing stands out and increases the visibility which makes it easier to monitor seat belt use. Know at a glance if employees are obeying OSHA regulations. These seat belts are engineered and tested to reduce cinching and provide cushioning for rough rides. The anti-cinch seat belt allows 1.5 - 2.5 of webbing to spool out even after the belt has been buckled together. The unique anti-cinch design provides the operator freedom of movement and encourages seat belt use by adjusting to the operators size. Measures 50 inch wrap around. Mounting hardware not included. Two capscrews - part number 2C000718 will be required to mount the seat belt.

## Seat Belts Retracting Non-Cinching

Part Number	Description
1806897	ORANGE 50 NON CINCHING
1807736	GREEN 50 ANTI CINCHING
2819929	BLACK 50 NON CINCHING
2827232	ORANGE 50 w/ switch RETRACTABLE
1807737	CLARK YELLOW GREEN 50 no switch
932736	BLACK 53 RETRACTABLE
4325182	BLACK 55 RETRACTABLE



# Static & Tie Straps

## Static Straps

Part Number	Description	Application
<b>Ground Chain</b>		
2800132	Steel Ground Chain	NPR,TMG,TMX,,EPX 9 Links
2794760	Bulk Ground Chain	Bulk Chain (10 Links)*
2801419	Bulk Ground Chain	Bulk Chain (12 Links)*
2801417	Connector Link	Connects Steel to Brass*
<b>Ground Straps</b>		<b>Truck/OE #</b>
2795048	GROUND STRAP- STATIC	AGP, AGT
8044028	GROUND STRAP- STATIC	CRX,GEX
933193	GROUND STRAP- STATIC	Crown 102126-1
933193	GROUND STRAP- STATIC	Daewoo 334028
933193	GROUND STRAP- STATIC	Hyster 0240065
933193	GROUND STRAP- STATIC	Mitsubishi 97004-08800
933193	GROUND STRAP- STATIC	Mitsubishi 97104-07600
933193	GROUND STRAP- STATIC	OP,WP
933193	GROUND STRAP- STATIC	Raymond 600-933
933193	GROUND STRAP- STATIC	Yale 504232234

\*Check Parts Pro for the correct makeup, installation and combination of steel and brass links to maintain UL Rating

## Tie Straps

Part Number	Description
1715312	8" BLACK NYLON
1807046	14.5" BLACK NYLON
1736910	14.5" WHITE NYLON
2387077	40" WHITE NYLON
2817341	8" STAINLESS STEEL

## Fans



1805636



1805638

### 12-36 Volt Fan

Part Number	Volt	Switch
1805636	24	N
1805637	36	N
1805635	12	Variable Speed Knob
1808062	24	Variable Speed Knob

### 2-Speed 36-48 Volt Fan

Part Number	Volt	Switch
1805638	48	Y
1809046	36	Y

### Features

Heavy-Duty Motor.  
Heavy Duty Die Cast Base.  
6 1/2 Fan, 4 Blades.  
Ball Joint Swivel Base.  
Chrome or Black Guard/Fan.  
Externally Grounded.



# Safety Accessories



1807970

## Fire Extinguishers

Part #	LBS	UL Rating	Optional Bracket	Dimensions
1906742	2.0	5 B:C	1806954	10.95" H x 3.25"
1807970	2.5	1-A 10 B:C	Includes Nylon Strap	13.75" H x 3.25"
1804474	2.5	1-A 10 B:C	Includes Metal Bracket	15" H x 5.3"
2799011	2.5	10 B:C	N/A	15.5" H x 5.75"
1014205	2.75	10 B:C	1806954	13.75" H x 3.25"
1013303	5	3-A, 40 B:C	Includes Metal Retention Bracket	16.07" H x 4.5"
2514432	10	4-A-60 B:C	1807948	19.52" H x 5.21"

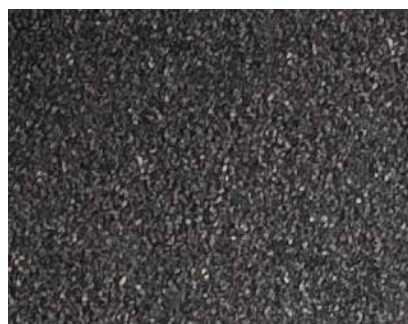
**Note: Not approved for use in Canada**

### Features

Designed to meet most commercial and industrial applications. Easy-to-pull safety pin. Powder coated cylinder for corrosion protection. Clear instruction label using graphics to show steps required to operate extinguisher.

#### Class UL Rating Guide:

- Class A - trash, wood, and paper
- Class B - liquids and gases
- Class C - energized electrical equipment



1801785

## Flex-Tred Anti-Slip Tape

Part Number	Color	Size
1801785	Black	36 x 10

### Features

Anti-Slip from any direction, wet or dry. Quick & Easy to Install. Installs in seconds on any dry, clean, smooth surface. Each piece has a heavy coating of pressure-sensitive adhesive specially formulated for a superior bond to practically any clean, dry, smooth surface. Available in Die Cuts or Rolls. Additional Colors available. Economical - Resistant to Solvents - Durable - Long Wearing.



1809737

## Digital Tilt Indicator

Part Number	Volts
1809737	12

Simple  
Effective  
Affordable



# Restraints



1804461

## Lanyards

Part Number	Description
1804461	6
919458	ROPE 6
1804462	SHOCK ABSORBING 6
8107548	LANYARD SHOCK ABSORBING
8089479	LANYARD 8 RETRACTABLE W/SWIVEL
934642	LANYARD TETHER

### Features

Shock absorbing lanyards and shock absorbers added to webbing and rope lanyards reduce shock to operator in the event of a fall. Lanyards include locking snap hooks. Retractable lanyard comes with carabiner. Meets or exceeds all applicable OSHA, ANSI & CSA requirements.

## Body Harness - OSX15

Part Number	Description
8089478	Body Harness



1804467

## Safety Belts

Part Number	Description
1804465	XS 32
1804466	SMALL 32-40
908653	MEDIUM 36-44
1804467	LARGE 40-48
1804468	XL 44-52
1804469	XXL 52 & UP

### Features

Meets or exceeds all applicable OSHA, ANSI & CSA requirements. Belts include single D-ring 3 back pad. Belts are made from heavy duty nylon webbing.



1807956

## Fall Protection Kit

Part Number	Description
1807956	Universal Size Full-Body Harness
1809076	Universal Size Full-Body Harness Only

### Features

Kit comes complete with everything workers will need to keep them safe and secure. Kit includes:  
 One universal-size harness with tongue-buckle leg straps.  
 One six foot tubular shock-absorbing lanyard.  
 One six foot cross-arm strap anchorage connector.  
 The harness sliding, back D-ring and sub-pelvic strap provide stability to the worker in case of a fall.

Our Fall Protection products meet applicable OSHA, ANSI, and CSA standards.



# Apparel



947462

## Hard Hat

Part Number	Color	Size	Rating
947462	CLARK Green	Adjustable OSFA	4

### Features

Injection-molded, polyethylene suspension.  
Features a short peak and trip profile.  
Functional rain trough.  
Accommodates chin strap.  
Moisturewicking brow pad is removable, washable and replaceable.  
Goggle retaining slots on suspension.  
Easy Quick-Slide sizing adjusts suspension from head sizes 6 5/8 - 8.  
Certified when headband is installed in reverse position.  
Made in America meets ANSI Z89.1, Type 1, Class C, E, and G requirements.



1808096

## Safety Vest

Part Number	Description
1808096	Universal Orange Reflective Adjustable Safety Vest

### Features

5-point Tear Away.  
High Visibility.  
Poly Mesh Material with Adjustable Velcro.



1809056

1809047	Lime Green Class 2 Level 2 Safety Vest - L
1809056	Lime Green Class 2 Level 2 Safety Vest - XL
1809057	Lime Green Class 2 Level 2 Safety Vest - 2XL
1809048	Lime Green Class 2 Level 2 Safety Vest - 3XL
1809049	Lime Green Class 2 Level 2 Safety Vest - 4XL

### Features

5-point Tear Away.  
High Visibility.  
Solid Poly Material.



1804456

## Back Supports

Part Number	Description
1804456	BACK SUPPORT SMALL 28- 32
1804457	BACK SUPPORT MEDIUM 33- 37
1804458	BACK SUPPORT LARGE 38- 42
1804459	BACK SUPPORT XL 43- 48

### Features

Adjustable 12 wide elastic suspenders.  
Adjustable closure hook and loop material.  
Rubberized webbing grippers to prevent support from slipping or moving.  
Samson has full length power net material for maximum breath ability.  
Features an extra wide panel on back for embroidery or screen printing.





**1809050**



**1809051**



**1809052**

## Safety Glasses

### Part # Description

1809050	Comet Clear
1809051	Fuse Amber
1809052	Grey Protective Tinted

### Features

Polycarbonate temples and single-piece wrap-around lens provide superior protection.  
Scratch resistant coating.  
ANSI Z87.1-2003 standard certified.



**1809063**



**1809065**

## Gloves

Part Number	Color	Size
1809063	Yellow w/ Knit Wrist	One Size
1809065	Yellow 12 Gauntlet	One Size

### Features

Smooth Finish Yellow PVC.  
Interlock Lined.  
Single Dipped Poly Vinyl Chloride.  
Provide Protection Against Petro-Chemicals.



# Safety Decal Kits



1808736



1808737



1808738



1808739

## Sit-Down Electric Safety Decal Kit #1808736

### Kit Includes

Part Number	Qty	Description
2349361	2	warning fork safety - large
2372604	1	warning fork safety - small
2791861	1	important battery specs
8036702	1	caution fan
2798235	1	operator caution
2349998	2	pinch point
2743642	1	warning key switch
1765564	1	caution brake
1747748	1	warning battery polarity
2770314	1	warning truck movement

## Sit-Down I.C. Safety Decal Kit #1808737

### Kit Includes

Part Number	Qty	Description
2798235	1	operator caution
2349998	2	pinch point
2372604	2	warning fork safety - small
2376150	1	warning moving parts
2387974	1	warning seat deck
2349361	2	warning fork safety -- large

## Narrow Aisle Safety Decal Kit #1808738

### Kit Includes

Part Number	Qty	Description
2349998	3	pinch point
2791861	1	important battery specs
2758310	1	warning safety belt worn
2372604	3	warning fork safety - small
2819954	1	warning serious injury

## Powrworker® Safety Decal Kit #1808739

### Kit Includes

Part Number	Qty	Description
1747748	1	warning battery polarity
2777635	1	warning no riding
2349998	1	pinch point
2812621	1	warning fatal injury
2791861	1	important battery specs
2377062	1	warning serious injury



# Reflections Tapes



8074016



8074059



8074064

## Reflective Tape

Part Number	Dimension
8074016	22.75 X 4.25

## Part Number Dimension

8074064	3.5 X 2
8074061	13 X 4.3
8074059	27.6 X 1.2
8095196	29.5 X 1.4
8074060	29.5 X 2

# Miscellaneous Decals

## Part Number Description

1232013	Fuel Warning Decal - English
1232183	Warning - serious injury
2808079	Genesis Series
2820010	CLARK Logo (White)
2821890	Model (White) CMC 18
8009088	Model (White) C20
8009089	Model (White) C25
8009090	Model (White) C30
8009092	Model (White) C20C
8009093	Model (White) C25C
8009094	Model (White) C30C
8009095	Model (White) C32C
8009466	Warning Hot Surface
8009528	LPG Fuel Cyl Replacement Process
8009529	Warning Operator Must be Trained
8019070	Model (white) C15C
8019071	Model (White) C18C
8019072	Model (White) C20sC
8024096	Pinch Point
8028295	Brake Oil Spec (ENGLISH)
8033774	TMG 15 AC
8033775	TMG 15S AC
8033776	TMG 17 AC
8033778	TMG 20 AC
8033779	TMG 20X AC
8033780	TMG 25 AC
8033874	Wiring Diagram
8034012	Service Chart (ENGLISH)
8034041	Hydraulic Diagram
8036653	Model (White) TMX 12
8036654	Model (White) TMX 13
8036655	Model (White)TMX 15
8036656	Model (White) TMX 15 S
8036657	Model (White) TMX 17
8036658	Model (White) TMX 18
8036659	Model (White) TMX 20
8036660	Model (White) TMX 20X

## Part Number Description

8036661	Model (White) TMX 25
8054507	Wiring Diagram (ENGLISH)
8063826	C75- entry side right
8063827	C75 -entry side left
903808	OHG Warning
904458	Fuel Changeover Inst.
904465	Fuel Selector S/W
928847	LP Gas Fueled Safety Maintenance
930714	OHG Warning- metal decal
930715	Plate-Less LP Tank (ENGLISH)
931529	Warning - serious injury - Korean
1232271	LPG-Fuel Warning - German
1232272	LPG-Fuel Warning - Spanish
1234113	Index - lift-tilt-rotator-clam
2820011	Model (White) CMP 15
2820012	Model (White)CMP 18
8009091	Model (White) C35
8009142	OHG Drop Test
8009220	Fuel Diesel
8009221	Fuel
8021918	Model (White) CMP 30 L
8033772	Model (White) TMG 12 AC
8033773	Model (White) TMG 13 AC
8033777	Model (White) TMG 18 AC
8033875	Wiring Schematic Std
931477	Brake Oil Spec (Korean)
931525	Brake Oil Spec (Spanish)
931617	Warning (French)
931620	Warning (German)
931621	Warning (Spanish)
933702	V-Lift, Mast
933703	V-Lift
933704	V35L, LH
933705	V35L, RH
933706	V-Lift
8073922	Gex 30S
8047065	GEN EX AC
2348904	CLARK LOGO MAST



# Paint

## CLARK OEM Paint

Color	Aerosol	Quart	Gallon
M Series Gray	1805643	1805641	
Equipment Green (After 1975)	1809095		
Equipment Green (Before 1975)	1800645		
Original Yellow Green (September 1975)	1801564		1801567
Hot Yellow Green (March 1980)	1802004		
Hot Yellow Green II (1984 to Present)	1802468	1802467	1802466
Hot Yellow Green Watsol II (1984 to Present)			1803246
Matte Black WTR			1803248
Matte Black	1804099	1804100	1804101
Accent White	1801572		
Safety Yellow	1802517		
Primer Gray	1802023		

## Touch-up

Color	Aerosol
Pallet Jack Green	1809759

## Aftermarket Paint

Color	Aerosol	Gallon
High Gloss Black	REN2200-A	REN2200-G
Satin Black	REN2201-A	
Lead Free Black	444573	
White		1801572

## Susan G. Kormen Paint

Color	Quarts	Aerosol
Light Pink	1809775	1809714
Dark Pink	1809776	1809715

## Mitsubishi

Color	Aerosol	Gallon
Gray	REN2039-A	N/A
Green	REN2015-A	N/A

## Nissan

Color	Aerosol	Gallon
Dark Gray	REN2006-A	N/A
New Gray	REN2009-A	REN2009-G
Orange	REN2004-A	REN2004-G
Platinum	REN2041-A	N/A
New White	REN2011-A	REN2011-G
Off White	REN2005-A	REN2005-G

## Toyota

Color	Aerosol	Gallon
Gray	REN2021-A	REN2021-G

## Yale

Color	Aerosol	Gallon
Bright Gold	REN2024-A	REN2024-G

## Caterpillar

Color	Aerosol	Gallon
Yellow	REN2600-A	N/A

## Hyster

Color	Aerosol	Gallon
White	REN2023-A	REN2023-G

## Primer/Hardener/Thinner

Color	Aerosol	Gallon	Pint
Primer Gray	1802023	N/A	N/A
Thinner	N/A	REN320	N/A



[illegible]





**Valley Industrial Trucks, Inc.**

Akron/Canton 330-733-6301

Youngstown 330-788-4081

**Call us: 888-375-0829**

**Visit us online:**

**[www.valleyindustrialtrucks.com](http://www.valleyindustrialtrucks.com)**