

# MIDWAY RENTALS AND SALES

WE RENT • SELL & SERVICE MOST EVERYTHING  
Locally Owned & Operated  
Est. 1979

**MARQUETTE**  
(906)228-4200



**KINGSFORD**  
(906)239-5010

[www.mrmqt.com](http://www.mrmqt.com)



**2024 VIRTUAL BUYERS SHOW**  
APRIL 15<sup>TH</sup> - MAY 17<sup>TH</sup>

## 15% OFF PRODUCTS BELOW

QUANTITY DISCOUNTS AVAILABLE INQUIRE WITH YOUR SALES REPRESENTATIVE



### JOBSITE SERIES 6' BAKER

**\$252.45**  
REGULAR PRICE: \$297.00

**1,100 lb**  
LOAD CAPACITY

**12'**  
REACH

- ✓ STACKABLE UP TO 3 UNITS HIGH FOR 24' REACH
- ✓ DOUBLE LOCKING 5" CASTERS
- ✓ QUICK AND EASY HEIGHT ADJUSTMENT

MODEL: ICISCMTL-1



**BuildMan**  
Grade

**\$337.45**  
REGULAR PRICE: \$397.00

### H-CART MULTI-USES

**3,000 lb**  
LOAD CAPACITY

- ✓ MULTIPLE CONFIGURATIONS
- ✓ REMOVABLE HANDLES & STORAGE HOLDERS
- ✓ 8" HEAVY DUTY NON-MARKING CASTERS
- ✓ CAN CARRY UP TO 25 GYPSUM BOARDS OF 1/2"

MODEL: IBMDHER31YGR-1



**BuildMan**  
Grade

**\$849.99**  
REGULAR PRICE: \$999.99

### DRYWALL & PANEL HOIST

**200 lb**  
LOAD CAPACITY

**14'-5"**  
REACH

- ✓ LAST LONGER FOR HEAVY USE
- ✓ NO CABLE TANGLE
- ✓ FAST ACTION SINGLE STAGE WINCH WITH SILENT CAM LOCK BRAKE
- ✓ MULTI-STAGE CHAIN MECHANISM

MODEL: IBMDPLMTL-1



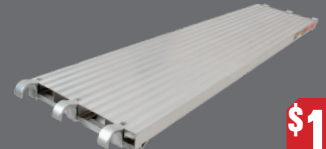
**\$135.15**  
REGULAR PRICE: \$159.00

### ALUMINUM PLATFORM WITH 5/8" PLYWOOD DECK

**75 lb/ft<sup>2</sup>**  
LOAD CAPACITY

**7'-19"**  
DIMENSION

MODEL: MMPP719MTL-1



**\$169.00**  
REGULAR PRICE: \$198.82

### ALL ALUMINUM PLATFORM

**75 lb/ft<sup>2</sup>**  
LOAD CAPACITY

**7'-19"**  
DIMENSION

MODEL: 0055216BIL-1



**\$13.36**  
REGULAR PRICE: \$15.72

### GALVANIZED GUARDRAIL

**60"**  
DIMENSION

**\$17.97**  
REGULAR PRICE: \$21.14

**84"**  
DIMENSION

MODEL: 00220105BIL-1 MODEL: 00220107BIL-1



**\$25.87**  
REGULAR PRICE: \$30.44

### GALVANIZED BRACE

**4' x 7'**  
DIMENSION

**\$27.07**  
REGULAR PRICE: \$31.85

**2' x 7'**  
DIMENSION

MODEL: 00100407BIL-1 MODEL: 00100207BIL-1



**\$36.07**  
REGULAR PRICE: \$42.43

### GALVANIZED LEVELING JACK WITH PLATE (SOLID)

**24"**  
DIMENSION

MODEL: 0032086PLBIL-1



**\$53.75**  
REGULAR PRICE: \$63.23

### GALVANIZED LEVELING JACK (SOLID)

**24"**  
DIMENSION

MODEL: 0034087BIL-1

**METALTECH**

# NEW PRODUCTS FIBERGLASS



**TYPE IA**  
**300 LB**  
**INDUSTRIAL**



✓ MULTI-FUNCTIONAL MOLDED TOP WITH VERSATILE TOOL SLOTS



✓ HEAVY DUTY FEET SLIP RESISTANT



**\$169.00**

**2' FIBERGLASS STEP-UP WORKBENCH, SAWHORSE STAND**

**300 lb**  
LOAD CAPACITY

MODEL: EWSFB24TIAMTL-1



**\$139.00**

**6' FIBERGLASS STEPLADDER**

**300 lb**  
LOAD CAPACITY

MODEL: ESLFB6TIAMTL-1



**\$189.00**

**8' FIBERGLASS STEPLADDER**

**300 lb**  
LOAD CAPACITY

MODEL: ESLF8TIAMTL-1



**\$220.00**

**3' FIBERGLASS STEP-UP WORKBENCH, SAWHORSE STAND**

**300 lb**  
LOAD CAPACITY

MODEL: EWSFB36T1AMTL-1



✓ SWIVEL RUBBER FEET  
• SELF-LEVELLING  
• GROUND ANCHOR  
• RING SPIKES

**\$350.00**

**24' FIBERGLASS EXTENSION LADDER**

**300 lb**  
LOAD CAPACITY

MODEL: EELFB24TIAMTL-1



**MARQUETTE**  
**(906)228-4200**



**KINGSFORD**  
**(906)239-5010**

[www.mrmqt.com](http://www.mrmqt.com)

**MIDWAY RENTALS AND SALES – OUTSIDE SALESMAN CONTACT INFORMATION**

**MARQUETTE:**

Brad Cuyler - (906) 362-5787 - bradc@mrmqt.com  
Jason Billings - (906) 869-9730 - jasonb@mrmqt.com  
Jerry Reynolds - (906) 235-1612 - jerryr@mrmqt.com

**KINGSFORD:**

Zach Haning - (906) 458-1672 - zachh@mrmqt.com  
Jacob Frechette - (906) 250-3977 - jacobf@mrmqt.com  
Travis Jones - (906) 250-1300 - travisj@mrmqt.com  
Dawson Rota - (906) 251-8401 - dawsonr@mrmqt.com