



**Bobcat®**

## **VersaHANDLER Telescopic Tool Carriers**

V519, V723, V923



***One Tough  
Animal®***



A Bobcat VersaHANDLER telescopic tool carrier is shown lifting a large, rectangular hay bale. The machine's boom and bucket are extended upwards, holding the hay bale high in the air. The background features a dramatic sky with clouds, suggesting a sunset or sunrise. The text "EVERY JOB IS IN YOUR REACH." is overlaid on the image, with "EVERY JOB IS" in white and "IN YOUR REACH." in large, bold, white letters. A red horizontal bar is positioned behind the text "EVERY JOB IS".

# EVERY JOB IS IN YOUR REACH.

VersaHANDLER® telescopic tool carriers from Bobcat reach far and lift high, making them a go-to favorite for farming, construction, landscaping, snow removal and rental. Highly maneuverable, these telehandlers offer three steering modes – all-wheel, crab and front-wheel – to work efficiently in tight quarters. A powerful boom arm gives you maximum capacity at full lift height and it extends your reach over fences, walls, landscaping and other obstacles. Like our legendary loaders and excavators, the VersaHANDLER lineup is designed to give you more versatility with an extensive array of Bobcat® attachments.







## PERFORMANCE



They're sized perfectly for virtually every application – but their lift, height and reach are monumental. The hard-working, durable VersaHANDLER TTC puts all kinds of possibilities within reach.





### **Automatic Tilt (Attachment) Positioning**

The boom up and boom down attachment level feature available on all VersaHANDLER models speeds material handling and boosts productivity by preventing spillage and ensuring consistent, productive attachment performance.

### **Two-Stage, Low-Profile Boom**

The low-profile, extendable boom gives you the power to access a wide range of lift heights and reach lengths. Another key advantage of a VersaHANDLER TTC is the low profile of the boom and rear pivot point. The boom position provides excellent visibility to the operator's right side. The low boom pivot point in the rear helps make it a powerful machine when pushing. As the machine pushes, more of the weight stands on the front axle.

### **Turbo-Charged Bobcat Engine**

The turbo-charged, liquid-cooled Bobcat engine packs a powerful punch for virtually any job you take on in your VersaHANDLER TTC.

### **Eco Mode**

This feature optimizes engine performance for less fuel consumption. Easily toggle on or off using a switch inside the cab.

### **Low Cab Height (V519)**

The low-profile design of the V519 ensures that you can go wherever the work takes you. Whether you're traveling through a wooded area or working inside buildings and sheds, you'll have more height clearance for more jobs. It also provides easier entry and exit as the day's work takes you in and out of the machine.

### **Hydrostatic Transmission**

The heavy-duty industrial hydrostatic transmission provides high wheel torque for digging and pushing, plus 2-Speed travel with shift-on-the-fly, speed management and dynamic braking. Controls are similar to an automobile for easy operation.

### **Z-Bar Boom Linkage (V923)**

The Z-bar boom linkage is designed for high loading performance, giving operators an optimized tilting angle for dumping and more breakout force to lift material out of a pile and dump it easily. The Z-bar boom linkage gives you:

- More range of bucket rotation
- Increased dump angle at full height
- Increased breakout force

### **Ride Control (V723 and V923)**

Ride control on the V723 and V923 reduces material spillage, allowing operators to travel at faster speeds for increased productivity. Thanks to its dampening effect, the feature also increases comfort by offering a smoother ride when traveling across uneven terrain.

### **Large-Diameter Tires**

The large-diameter tires (20-inch on the V519 and 24-inch on the V723 and V923) have an aggressive all-terrain tread that won't bog down in soft ground conditions.

### **Boom Float (V519 and V923)**

Enable boom float while moving on uneven ground for smooth performance with attachments. Float in reverse for smoothing with a bucket.

### **Load Sense Hydraulic System (V923)**

The V923 hydraulic system is designed for faster boom speeds and heavier lifting, giving you extra power for smoother control when loaded, and the fastest boom cycle times possible when empty. You can achieve faster boom movement at a lower rpm with improved multifunctional capability.

# V923



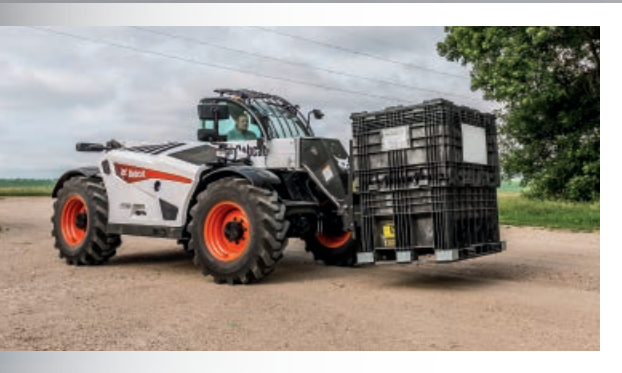
**13.5** FOOT  
REACH

**23** FOOT  
LIFT HEIGHT

**9,000** POUNDS  
MAX. RATED CAPACITY



## VERSATILITY



The versatility of the two-stage, low-profile boom is endless. Reach into the highest trucks or over fences, stockpile and stack materials, or backfill hard-to-reach areas.





### Max. Rated Capacity

In a VersaHANDLER TTC, you can confidently lift up to 5,500 pounds in the V519, 7,700 pounds in the V723 and 9,000 pounds in the V923.

### Three Steering Modes

VersaHANDLER TTCs have three steering modes to give you application-matched maneuverability. When you cycle through different steering modes, the wheel alignment system semi-automatically reorients your wheels to quickly and easily transition from front-wheel, all-wheel and crab steering.

- **All-Wheel Steer**

All-wheel steer mode allows you to make quick and tight turns – the kind you can't achieve in an articulated loader.

- **Front-Wheel Steer**

The front-wheel steer mode enables top-speed road travel, eliminating the need to haul the machine on a trailer from jobsite to jobsite.

- **Crab Steer**

Crab steer takes your maneuverability one step further by allowing precise side-to-side positioning.

### Three Travel Modes

Three travel modes give you the versatility you need for movement in numerous applications.

- **Travel Speeds**

The V519 has a standard 2-Speed travel for improved productivity and better maneuverability. In addition, the V723 and V923 are standard with 4-Speed travel. Equipped with a low and high range gear box you have the capability of two speeds in each range; this allows you four speeds to give you more control and maneuverability.

- **Speed Management**

Use speed management to adjust your travel speed independently from your engine speed. Use your accelerator pedal to set the engine speed to the optimal setting for the attachment you're operating, then dial in your desired travel speed. It's especially helpful when you operate attachments that perform best with a slow and consistent travel speed.

- **Inching Control**

Engage working mode by lightly depressing the brake pedal up to a half stroke, and quickly cut your travel speed while sustaining the engine throttle. This inching control destrokes the drive pump to reduce drive speed without reducing power to your attachment – enabling slower, more precise control without sacrificing productivity.

# V723



**13** FOOT  
REACH

**23** FOOT  
LIFT HEIGHT

**7,700** POUNDS  
MAX. RATED CAPACITY





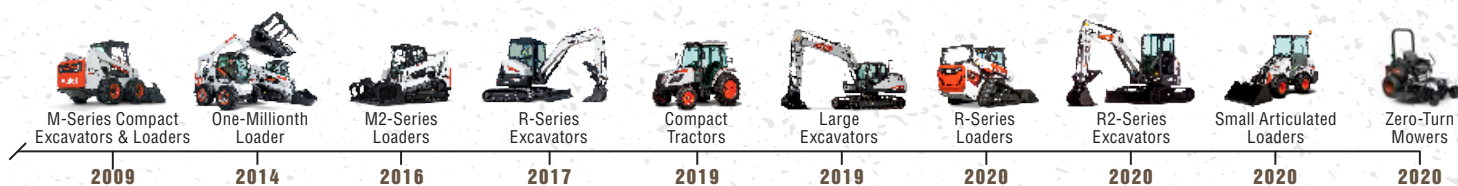
## B O B C A T T I M E L I N E







# John Deere Animal<sup>®</sup>





# Attachment-Ready

Pick a job – any job. Comparable machines can't match the VersaHANDLER telescopic tool carrier's versatility. It doesn't just pick and place materials; it works with the widest range of attachments you can find on a telescoping work machine. This gives you the best of both worlds: the extended reach and great lift capacity of a telescoping boom with the versatility advantage of numerous attachments.



### Selectable Auxiliary Hydraulic Flow

The VersaHANDLER machine allows you to quickly select an auxiliary flow rate that best matches a particular attachment.

### Hydraulic Quick Couplers

The standard hydraulic coupler block and electrical connector – the same style found on Bobcat loaders – is tough and easy to use. Bobcat quick couplers can release trapped line pressure for fast, clean attachment changes every time.

### 7-Pin Attachment Control Kit (V519)

Get additional control and functionality in selected attachments with the 7-pin attachment control kit. Several attachments require control of more than one function, and this system gives you fingertip control of these extra functions. On-the-fly adjustments, such as the angle of an angle broom attachment, are quick and easy with a simple toggle switch.







### Joystick-Controlled Auxiliary Hydraulics

Control the auxiliary hydraulic function with the thumbwheel on the joystick. This allows you to manage the operation of hydraulically powered attachments such as grapples and augers with one finger.

### Bob-Tach Attachment Mounting System (V519)

Quickly change attachments with the V519's Bob-Tach® mounting system. Switch to a new bucket, a pallet fork, or a variety of tough, Bobcat-built hydraulic attachments. It keeps a tight attachment fit, every time. The Bob-Tach system makes it possible for Bobcat to provide the largest attachment selection ever for a telescopic tool carrier.

### Bobcat TLS Hydraulic Coupler Attachment Mounting System (V723 and V923)

Bobcat telehandler quick-tach (available on V723 and V923) provides robust, compact attachment versatility. The hydraulic lock function allows you to change non-hydraulic attachments safely and quickly without leaving the cab.

#### V519 Attachments

Angle broom	Industrial fork grapple	Root grapple
Auger	Light material bucket	Severe-duty bucket
Bale fork	Pallet fork, floating	Snow pusher
Combination bucket	Pallet fork, severe-duty	Soil conditioner
Flail cutter	Rock bucket	Sweeper
Heavy-duty snow blade		Truss boom

#### V723 and V923 Attachments

Bale fork, rigid	Light material bucket
General purpose bucket	Pallet fork, floating
Grapple bucket	Pallet fork, rigid





# Uptime Protection

Bobcat prides itself on building machines that are protected from front to back against the world's toughest jobs. The VersaHANDLER line is no exception. It's made with the strong materials, quality construction and reliable designs that our customers need to earn their living.





### **Box-Welded Frame with Protective Chassis**

Bobcat has designed all of its telehandlers with the same robust box-welded frame for enhanced rigidity – plus a low center of gravity for great overall stability. The engine, cooling system and many critical components are well-protected within the center of the chassis, ensuring minimal wear and tear due to jobsite obstacles or harsh terrain.

### **Sealed Engine Compartment**

The engine compartment provides a completely enclosed environment that helps to shut out dust and debris, ensuring long component life.

### **Side-by-Side Cooling Design**

The radiator, oil cooler and intake air coolers are mounted side by side, carefully located to receive the same quality and temperature of air, which provides efficient, consistent cooling ability, even in the most severe and dirty conditions.

### **Automatic Reverse Cooling Fan**

Excellent for dusty and light-material applications, the available reversible fan gives you the ability to keep the radiator area cleaner for longer – extending productivity and uptime while reducing the immediate need to clean debris by hand. Just flip a switch to reverse the cooling fan or set it to automatically reverse at 30-, 45-, 60- or 90-minute intervals to purge the system of dust and debris.

### **Protected Cylinders**

Cylinders are strategically located in areas that are less prone to damaging contact on the job, protecting them from harm.

### **Fine Mesh Intake Screen**

The engine cover screen helps prevent large debris from entering the engine basket and plugging the radiator.

### **Poly Fuel Tank**

Diesel is contained in a durable, rust-free polypropylene fuel tank to minimize condensation and contamination of the fuel system.

### **Battery Run-Down Protection**

The lighting circuit automatically shuts down after a predetermined time and voltage level, preventing accidental battery discharge.

### **Non-DPF Tier 4 Engine**

Bobcat engines have a specially designed combustion chamber that minimizes the amount of particulate matter (PM) the engine creates. The amounts are low enough that a diesel particulate filter (DPF) isn't needed for Tier 4 compliance, which simplifies maintenance as well as operation.

### **Machine Shutdown Protection**

The standard machine shutdown protection system continuously monitors the engine coolant, hydraulic oil, engine oil and other vital machine functions. If a monitored function is out of normal operating range, the system provides an alert and warning message. If the issue is severe, the machine automatically shuts down to avoid catastrophic failure.

### **Impact-Resistant Engine Access Panel**

The engine access panel resists damage from impact and retains its good looks for years, thanks to its flexible, resilient and rust-free composite construction.

### **Reinforced Heavy-Duty Boom Pivot and Enclosed Frame Welds**

The boom pivot features thick steel reinforcement for enhanced durability and long life. Heavy-duty, enclosed frame welds offer additional support throughout the frame.

### **Common Parts**

Many VersaHANDLER parts are the same ones used in our legendary compact loader line, which ensures easy parts availability and minimal downtime if there is an issue.

### **Optional Window Guards**

Designed to protect you and your investment in the toughest conditions, the optional front and top window guards protect your machine from falling and flying debris.

### **Heavy-Duty Engine Mounts and Compartment**

A protected engine on the VersaHANDLER telescopic tool carrier starts with a thick steel frame that covers both sides and the bottom of the engine. Rubber engine mounts reduce shock on difficult terrain.



## COMFORT

### High-Visibility Design

The low-profile boom on the VersaHANDLER TTC sits below the operator's eye level to provide an optimal view of your surroundings. Front, top and rear window wipers clear away moisture and minimize the buildup of dust, debris and mud. Multiple mirrors on the operator's left and right assist you when working in confined areas. For even more visibility, add the optional rear mirror kit or the work light kit.

### Suspended Cab

A cushioning spring suspension isolates and reduces vibration inside the cab and improves ride quality.

### Wraparound Rear Window (V723 and V923)

The V723 and V923 have a unique wraparound rear window that gives you a completely unobstructed line of sight to the side and rear of the machine.

### Clean Workgroup Plumbing

Hydraulic hoses are carefully routed to minimize exposure to friction and contact with jobsite objects and obstacles.

### Opening Rear Window and Split Door

The rear window provides an emergency exit, and the split door allows you to work with open windows for easier communication on the job.

### Boom Cushioning System

The boom cushioning system makes it easier to confidently handle your load, allowing for smoother motion as the attachment angles to its minimum or maximum pitch, or when the boom reaches full retraction.

### Standard Heat and Air Conditioning

The AC unit is integrated into the machine, without a bulky add-on unit to obstruct your visibility or get in your way. Automotive-style vents allow you to point the air where you need it, providing greater comfort in all weather conditions.



# V519



**10** FOOT  
REACH

**19** FOOT  
LIFT HEIGHT

**5,500** POUNDS  
MAX. RATED CAPACITY



# ***CAB COMFORT***

You can face many hours a day in your VersaHANDLER telescopic tool carrier, and you'll still feel good when the work is done. A roomy, fully enclosed cab with heat and air conditioning allows you to work in comfort all year long.



## **Cloth, Adjustable Suspension Seat**

The cloth suspension seat on the V519 and V723 provides the ultimate in adjustability and comfort for long hours of operation. The V923 features an air suspension seat that automatically adjusts to the operator's weight for maximum comfort.

## **Optional Keyless Start System**

The keyless start option gives you the convenience of keyless start and the added security of an owner-defined numeric code.

## **Joystick Thumb Switch**

A simple thumb switch controls forward, neutral and reverse, making travel direction control virtually effortless.

## **Smart Handling System (SHS)**

SHS combines productivity and precision, allowing you to set the boom speed for lifting, telescoping and tilting, adapting the machine to your work. It's ideal for achieving precise boom motion when the job demands high-rpm performance.

## **Total-Control Joystick**

A single intuitive joystick on the VersaHANDLER TTC controls the travel direction, lift and tilt functions, boom extension, and auxiliary hydraulics. This gives the operator the highest possible accuracy for lifting loads with care.



# Simple Controls

Controls on the VersaHANDLER telescopic tool carrier are designed to be simple and straightforward.



### Simple Control Layout

Convenient, intuitive and easy to find, the VersaHANDLER machine's simple controls make operation easy and productive.

### Dynamic Braking System with Automatic Parking Brake

The VersaHANDLER TTC's dynamic braking system will decelerate and stop the machine as soon as you let your foot off the accelerator pedal – unlike a torque converter-style transmission that coasts before coming to a complete stop. This gives you maximum control on slopes where you can easily inch your way up or down without having to apply the brake. When you release the accelerator pedal as the engine idles, the parking brake automatically engages. To disengage, press the button on the instrumentation panel or press down on the accelerator pedal.

### Multi-Functional LCD Screen

Get a clear, easy-to-read overview of machine operation at the touch of a button: job hours, travel or engine speed, boom angle, frame leveling angle, auxiliary hydraulic flow setting, and much more.

### Automotive-Style Foot Pedals and Steering Wheel

The familiar steering wheel, accelerator pedal and brake pedal make maneuvering around jobsites simple.

### Semi-Automatic Wheel Realignment

When you cycle through different steering modes, the VersaHANDLER TTC wheel alignment system semi-automatically reorients your wheels to quickly and easily transition from front-wheel, all-wheel and crab steering.





# Easy Serviceability

Bobcat knows you want to spend your day working – and not gaining access to your machine components. That's why VersaHANDLER TTCs are designed for quick routine maintenance and simple repairs.

## Simple Cooling System Cleanout

The side-by-side mounted radiator, oil cooler and fan provide a clean engine compartment layout for easy access. Dirt and debris removal is quick and simple whenever cleaning is necessary.

## Double-Element Air Filter

Uptime protection is critical for a machine this versatile, and it starts with a double-element air cleaner system.

## Bobcat Service Analyzer

This feature allows your dealer to download machine performance data to a laptop – including faults, warning codes and more – to quickly troubleshoot machine issues and correct them.

## Adjustable Boom Guides

Nylon wear pads, on the inside corners of the extendable boom, allow for better guidance and reduce free play of the boom. They're easily adjustable and require minimal servicing and greasing.

## Easy Engine Access

The side-mounted engine puts routine maintenance checks, filters and other engine components in easy reach.

## Remote Oil Filter

The remote oil filter location provides easy access to the oil filter – within reach of other service points for simple, fast oil changes.





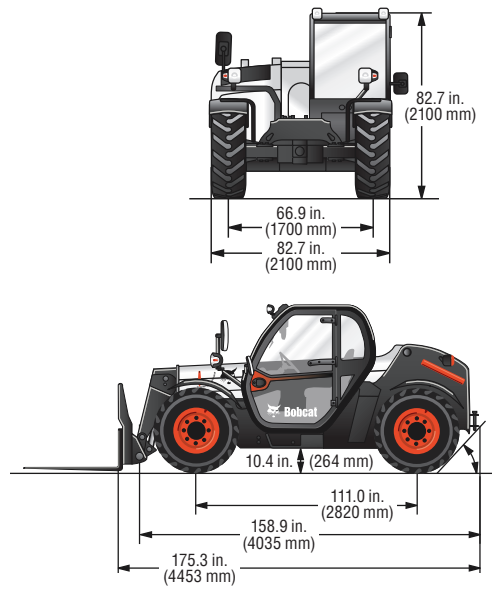
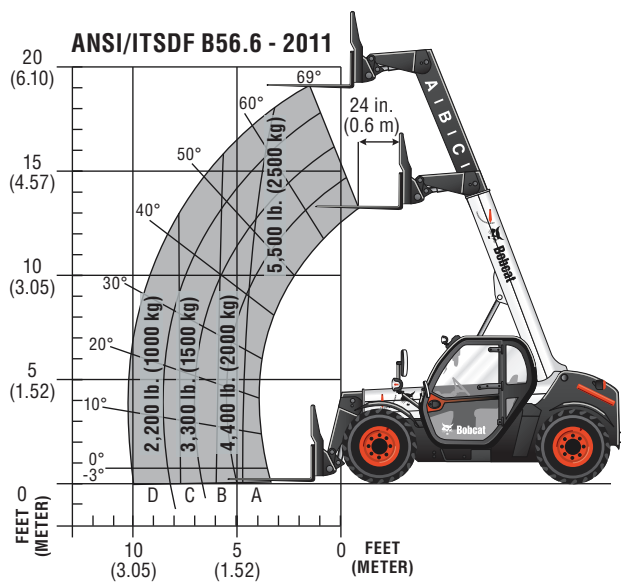
# SPECIFICATIONS



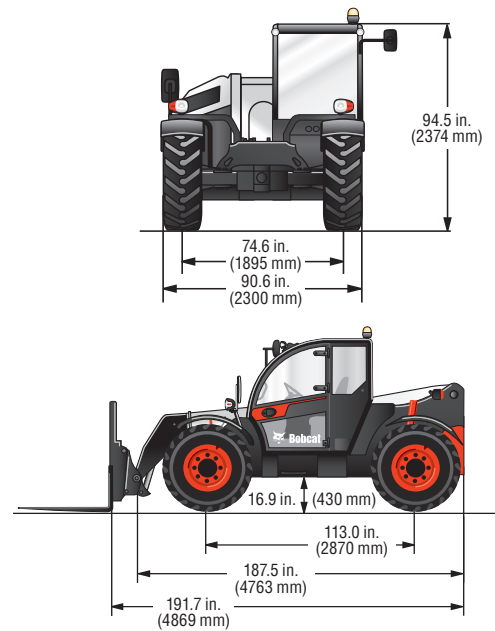
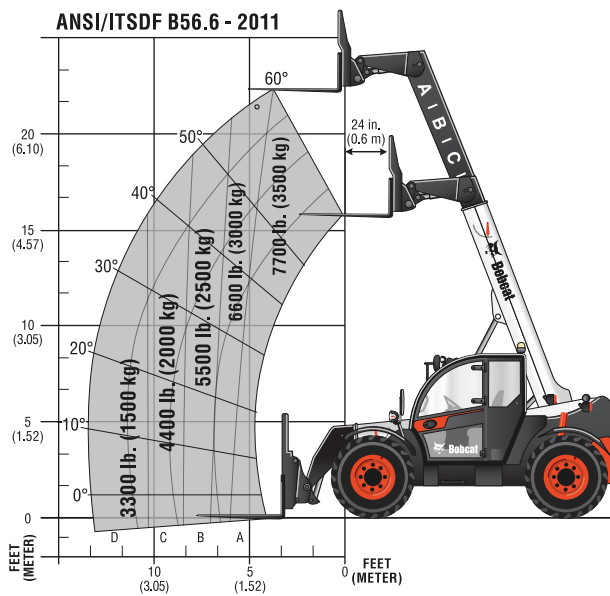
MODEL	V519	V723	V923
<b>Performance</b>			
Operating Weight	11,001 lb. (4990 kg)	17,155 lb. (7781 kg)	18,158 lb. (8235 kg)
Max. Rated Capacity	5500 lb. (2495 kg)	7700 lb. (3500 kg)	9000 lb. (4100 kg)
Max. Load Full Height	5500 lb. (2495 kg)	7700 lb. (3500 kg)	7000 lb. (3200 kg)
Max. Load at Full Reach	2205 lb. (1000 kg)	3308 lb. (1500 kg)	3749 lb. (1700 kg)
Auxiliary Hydraulic Flow	21.1 gpm (80.0 L/min.)	26.4 gpm (100.0 L/min.)	39.6 gpm (150.0 L/min.)
Hydraulic Pressure	3626 psi (250 bar)	3626 psi (250 bar)	3699 psi (255 bar)
Lift Height	230.0 in. (5842 mm)	273.9 in. (6957 mm)	276.9 in. (7033 mm)
Max. Reach	123.3 in. (3132 mm)	161.5 in. (4102 mm)	162.3 in. (4122 mm)
Reach at Max. Height (24" load center)	17.9 in. (454 mm)	48.1 in. (1223 mm)	53.7 in. (1364 mm)
Bucket Dump Height	153.5 in. (3900 mm)	153.5 in. (3900 mm)	153.5 in. (3900 mm)
Reach at Dump Height	46.2 in. (1175 mm)	46.3 in. (1175 mm)	46.3 in. (1175 mm)
Bucket Dump Angle Full Height	54°	48°	61°
Max. Travel Speed			
Low	4.7 mph (7.5 km/hr.)	3.7 mph (6.0 km/hr.)	3.7 mph (6.0 km/hr.)
High	18.3 mph (29.5 km/hr.)	18.7 mph (30.0 km/hr.)	24.8 mph (40.0 km/hr.)
Draw Bar Pull	6744 lbf. (30,000 N)	15,062 lbf. (67,000 N)	16,635 lbf. (74,000 N)
<b>Dimensions</b>			
Tires	405/70 X 20	400/80 X 24	400/80 X 24
Length Fork Heel to Rear	175.3 in. (4453 mm)	191.7 in. (4869 mm)	195.9 in. (4975 mm)
Length Fork Heel to Rear Hitch	184.5 in. (4674 mm)	200.9 in. (5090 mm)	200.5 in. (5094 mm)
Length Front Tire to Rear	158.9 in. (4453 mm)	163.2 in. (4145 mm)	187.6 in. (4765 mm)
Wheelbase	111.0 in. (2820 mm)	113.0 in. (2870 mm)	113.0 in. (2870 mm)
Ground Clearance	10.4 in. (264 mm)	16.9 in. (430 mm)	16.9 in. (430 mm)
Cab Height	82.7 in. (2100 mm)	95.4 in. (2424 mm)	95.4 in. (2424 mm)
Cab Height with Beacon	90.2 in. (2290 mm)	100.8 in. (2561 mm)	100.8 in. (2561 mm)
Width	82.7 in. (2100 mm)	90.6 in. (2300 mm)	90.6 in. (2300 mm)
Tread	65.6 in. (1666 mm)	74.6 in. (1895 mm)	74.6 in. (1895 mm)
Inside Turning Clearance	52.3 in. (1329 mm)	43.0 in. (1092 mm)	43.0 in. (1092 mm)
Fork Turning Clearance	183.0 in. (4648 mm)	197.4 in. (5015 mm)	195.4 in. (4962 mm)
<b>Engine</b>			
Make/Model	Bobcat D34 Turbocharged (T4)	Bobcat D34 Turbocharged (T4)	Bobcat D34 Turbocharged (T4)
Fuel/Cooling	Diesel/Liquid	Diesel/Liquid	Diesel/Liquid
Cylinders	4	4	4
Horsepower	74.0 hp (55.2 kW)	100.0 hp (74.5 kW)	130.0 hp (97.0 kW)
Rated rpm	2400 rpm	2400 rpm	2400 rpm
Torque @ 1400 rpm	239.7 ft.-lb. (325 Nm)	316.7 ft.-lb. (430 Nm)	368.3 ft.-lb. (500 Nm)
Displacement	207.5 cu. in. (3.4 L)	207.5 cu. in. (3.4 L)	207.5 cu. in. (3.4 L)
Fuel Tank Capacity	30.4 gal. (115.0 L)	36.4 gal. (138.0 L)	36.4 gal. (138.0 L)
<b>Operation</b>			
Four Wheel Drive	Std	Std	Std
2-Speed Hydrostatic Transmission	Std	Std	Std
Two Gear Range Gearbox	—	Std	Std
Steering Modes	Front wheel, four wheel opposed, crab	Front wheel, four wheel opposed, crab	Front wheel, four wheel opposed, crab
Speed Management	Std	Std	Std
Inching Control	Std	Std	Std
Dynamic Braking	Std	Std	Std
SAPR Brakes	Std	Std	Std
<b>Features</b>			
Self Diagnostic Troubleshooting	Std	Std	Std
Reversible Fan	Std	Std	Std
Removable Beacon	Opt	Std	Std
ROPS/FOPS Approved Cab	Std	Std	Std
Cab with Heat and Air Conditioning	Std	Std	Std
Three-Way Adjustable Suspension Seat	Std	Std	—
Automatic Air Suspension Seat	—	—	Std
Front Work Lights	Std	Std	Std
Rear Work Lights	Std	Std	Std
Road Lights	Std	Std	Std
Pin Style Rear Hitch	Std	Std	Std
Front-Top-Rear Window Wipers	Std	Std	Std
Back Up Alarm	Std	Std	Std
Retractable Seat Belt	Std	Std	Std
Boom Angle Indicator	Std	Std	Std
Ride Control Boom Suspension	—	Std	Std
SHS (Smart Handling System)	Std	Std	Std
Battery Disconnect	Std	Std	Std
12 Volt Accessory Port	Std	Std	Std
Cup Holder	Std	Std	Std
<b>Attachment Capabilities</b>			
Bob-Tach Attachment Mounting System	Std	—	—
Bobcat TLS Hydraulic Coupler Attachment Mounting System	—	Std	Std
Auxiliary Hydraulics with Quick Couplers	Std	Std	Std
Standard Flow	21.0 gpm (80.0 L/min.)	26.4 gpm (100.0 L/min.)	39.6 gpm (150.0 L/min.)
Hydraulic Pressure	3626 psi (250 bar)	3627 psi (250 bar)	3699 psi (255 bar)
Pressure Release Block	Std	Std	Std
Fingertip Auxiliary Control	Std	Std	Std
Fingertip Boom Extension Control	Std	Std	Std
Attachment Control Kit (7 pin connector)	Std	—	—



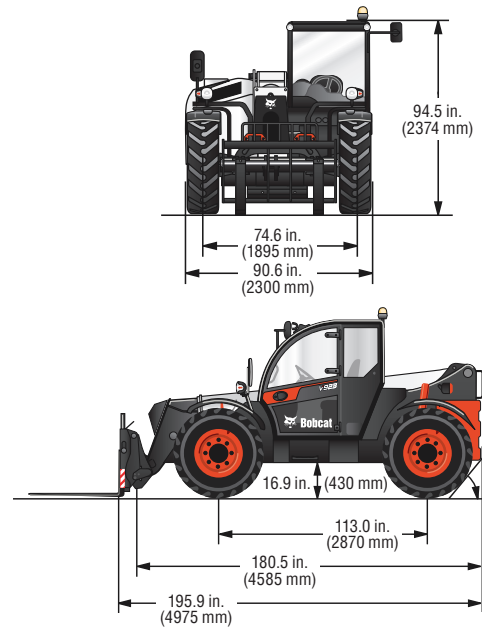
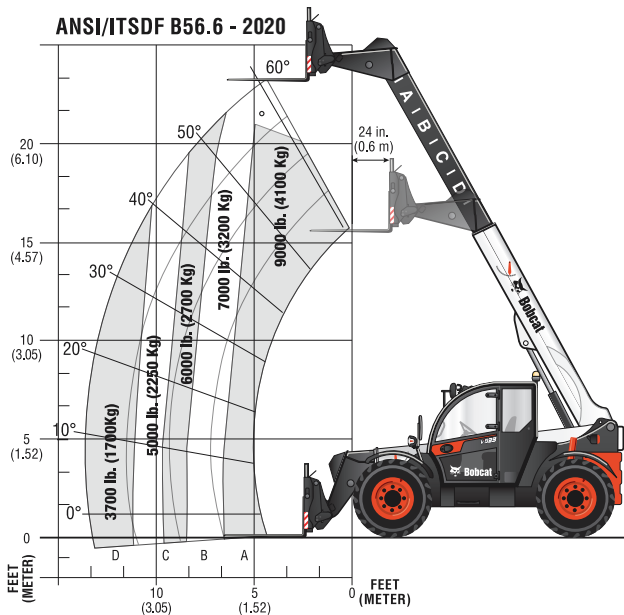
## V519



## V723



## V923







# YOU ARE ONE TOUGH ANIMAL.®

Everything we put into Bobcat equipment is designed to make more of whatever you bring to the job. Whether it's strength, versatility, speed or agility, it's built around you.

Certain specification(s) are based on engineering calculations and are not actual measurements. Specification(s) are provided for comparison purposes only and are subject to change without notice. Specification(s) for your individual Bobcat equipment will vary based on normal variations in design, manufacturing, operating conditions, and other factors. Where applicable, dimensions are in accordance with ISO standards. Specifications and design are subject to change without notice. Pictures of Bobcat units may show other than standard equipment. All dimensions are given for VersaHANDLER telescopic tool carriers with standard tires. All dimensions are shown in inches. Respective metric dimensions are enclosed by parentheses. Bobcat Company complies with the requirements of ISO 9001 as registered with BSI.



**Bobcat is a Doosan company.** Doosan is a global leader in construction equipment, power and water solutions, engines, and engineering, proudly serving customers and communities for more than a century.

Bobcat®, the Bobcat logo and the colors of the Bobcat machine are registered trademarks of Bobcat Company in the United States and various other countries.

©2020 Bobcat Company. All rights reserved.



**B-1991(10/20)**  
Kn-4M-1020-70252-F

**Bobcat Company**  
250 East Beaton Drive • West Fargo, ND 58078

**Bobcat.com**



**Bobcat®**

***One Tough Animal.***