

# Specifications

# TC92SJ

**TEUPEN**  
...access redefined

since '77

## PERFORMANCE

Working height, max.	98 ft 5 in
Platform height, max.	91 ft 10 in
Horizontal outreach, max. (441 lbs)	45 ft 11 in
Horizontal outreach, max. (176 lbs)	61 ft 4 in
Platform capacity, max.	441 lbs
Jib, movable	180 °
Platform, rotatable	180 °
Turntable rotation, max.	450 °
To be elevated up on ground slope of	16,7 ° / 30,0 %
Track drive, height- and width-adjustable	8 / 6 in
Gradeability, max.	16,7 ° / 30,0 %
Slope angle, max.	16,7 ° / 30,0 %
Travel speed, max.	1.9 mph

## MEASUREMENTS\*

Platform (height) (A)	3 ft 7 in
Platform (length) (B)	3 ft 11 in
Platform (width) (C)	2 ft 7 in
Length (D)	23 ft 7 in
Length without platform (E)	23 ft 7 in
Height (F)	6 ft 5 in
Width, min. (G)	5 ft 2 in
Ground clearance, max. (H)	10 in
Track (length x width) (I)	6 ft 3 in x 9 in
Stabilizer footprint both side wide (length) (J)	17 ft 4 in
Stabilizer footprint both side wide (width) (K)	15 ft 7 in
Stabilizer footprint one side narrow (length) (L)	21 ft 9 in
Stabilizer footprint one side narrow (width) (M)	12 ft 11 in
Stabilizer footprint both sides narrow (width) (N)	9 ft 9 in
Stabilizer plate (length x width)	12 in x 8 in

## WEIGHT\*

Total weight	9,480 lbs
Live load in travelling position	77.2 psf
Live load in working position	41.7 psf
Point load per outrigger plate, max.	5,845 lbf

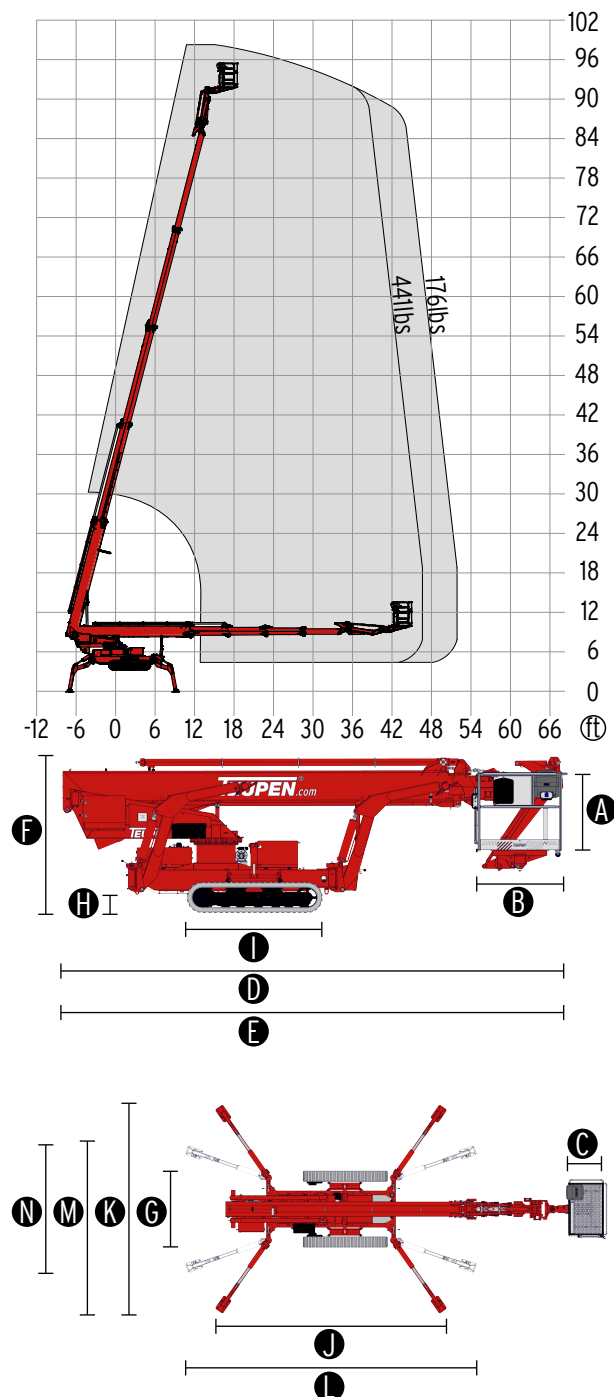
## POWER SOURCES

Standard power sources:

■ Combustion engine (Diesel)	Kubota D902 (16,1 kW / 21,6 hp)
Fuel tank capacity (Diesel engine)	10.06 gal

## POWER SUPPLY

Electric current, max.	115 V / 13 A
------------------------	--------------



## STANDARDS



EN ISO 9001



ANSI/SAIA 92.20:2020  
CAN/CSA B354.6:17  
"Design & manufacture criteria"

The technical data may deviate +/- 3 % from the specified values.

\* Weight and dimensions may vary depending on options and accessories.

www.**TEUPEN**.com

# Features

# TC92SJ



## CHASSIS

- Powerful track drive with hydraulic braking system
- Precise manoeuvring via sensitive remote control
- White, non-marking rubber tracks with specially arranged profile for optimal grip
- Hydraulically height- and width-adjustable crawler track drive

## STABILIZATION

- Electrohydraulic stabilizers with automatic levelling and ground pressure sensor system
- Variable stabilization system with one side or both sides narrow setup option
- 4 sliding pads (33.5" x 13.4" x 3.0")

## BOOM SYSTEM

- Boom system made of steel/aluminium boom tubes
- All functions available via radio remote control
- Stepless, electrical proportional control system with intuitive operation
- Robust, lockable control panel
- Parallel guided platform with electro hydraulic levelling
- 180° platform rotation for additional flexibility
- Turntable rotation via high-performance slewing ring and hydraulic motor
- Platform changing system
- Coming home function - automatic return of the boom into transport position

## POWER SOURCE

- Diesel engine Kubota D902 (16,1 kW / 21,6 hp)
- Start-stop device for combustion engine in the platform

## PRODUCTIVITY, SAFETY, QUALITY

- Hydraulic emergency lowering via hand pump
- Power socket in the platform (115 V / 13 A)
- Detachable platform, attachment points for safety harnesses and tool tray
- Drive operation without platform possible
- Lockable storage box
- Protected, internal power track for platform control
- Hydraulic system filled with biodegradable hydraulic oil
- High-quality paint in RAL 3020 (red)
  - Hydraulic cylinders in RAL 9006 (white aluminium)
- Unlockable check valves located directly on hydraulic cylinders
- Hydraulic system protected by pressure relief valves
- Hydraulic tank, emergency control, connecting cables and hoses are mounted protected
- Display in the control panel
- Hour meter
- Fuzzy control technology
- Tree package, including
  - 4 covers, piston rod (stabilizer)
  - Cover (control box, turntable)
  - Cover (telescopic cylinder hydraulic connection)

## CONTACT

### TEUPEN North America Inc.

10701 Southern Loop Blvd.  
Charlotte (Pineville), NC 28134  
USA

Phone (704) 248-9888  
Fax (704) 248-9889  
E-mail [info@teupen-usa.com](mailto:info@teupen-usa.com)

\* Weight and dimensions may vary depending on options and accessories.

Product specifications are subject to change without notice or obligation. Photographs and drawings in this document are for illustrative purposes only. Refer to the appropriate Operator's Manual for instructions on the proper use of this equipment. Failure to follow the appropriate Operator's Manual when using our equipment or to otherwise act irresponsibly may result in serious injury or death. The only warranty applicable to our equipment is the standard written warranty applicable to the particular product and sale and we make no other warranty, expressed or implied. Products and services listed may be trademarks, service marks or trade-names of TEUPEN Maschinenbau GmbH and/or its subsidiaries in the U.S.A. and many other countries. "TEUPEN", "Access redefined" and "LEO Series" are registered Trademarks of TEUPEN GmbH in the United States of America and many other countries. © 2021 TEUPEN Maschinenbau GmbH.



2021-B\_en\_US