

Specifications

LEO 56Aic

TEUPEN[®]
...access redefined

since '77

PERFORMANCE

Working height, max.	62 ft 11 in
Platform height, max.	56 ft 5 in
Horizontal outreach, max.	37 ft 2 in
Up and over clearance, max.	23 ft 7 in
Platform capacity, max. (1 person)	348 lbs
Jib, movable	-
Platform, rotatable	180 °
Turntable rotation, max.	endless
To be elevated up on ground slope of	16,7 ° / 30,0 %
Track drive, height- and width-adjustable	8 / 6 in
Gradeability, max.	16,7 ° / 30,0 %
Slope angle, max.	16,7 ° / 30,0 %
Travel speed, max.	1.9 mph

MEASUREMENTS*

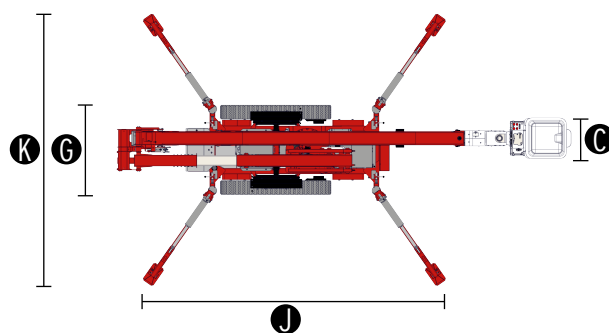
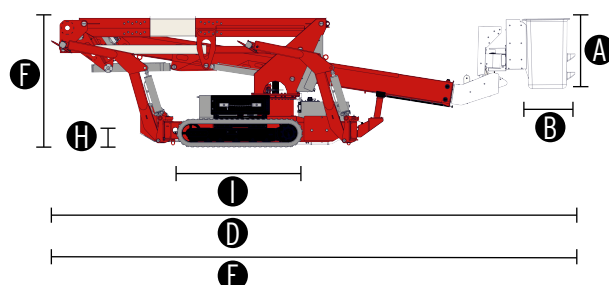
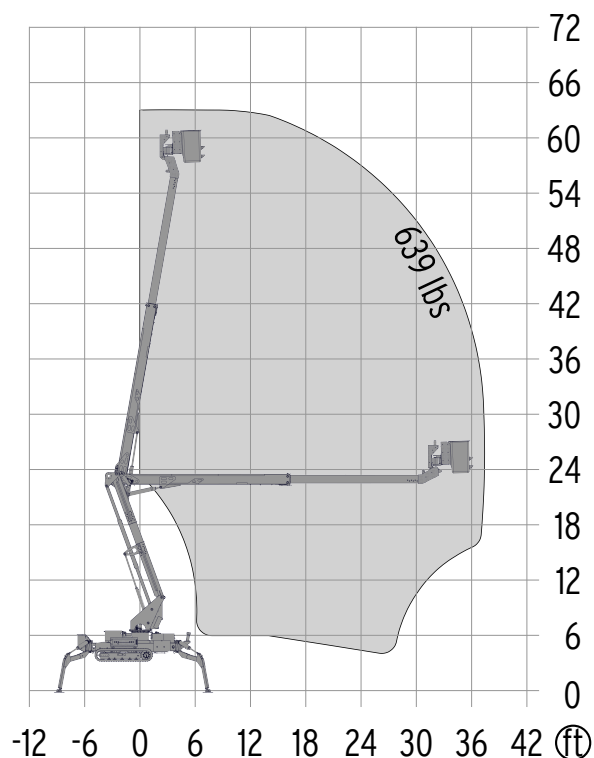
Platform (height) (A)	3 ft 7 in
Platform (length) (B)	2 ft 5 in
Platform (width) (C)	2 ft 4 in
Length (D)	25 ft 11 in
Length without platform (E)	-
Height (F)	6 ft 6 in
Width, min. (G)	5 ft 2 in
Ground clearance, max. (H)	10 in
Track (length x width) (I)	6 ft 3 in x 9 in
Stabilizer footprint (length) (J)	17 ft 4 in
Stabilizer footprint (width) (K)	15 ft 7 in
Stabilizer plate (length x width)	12 in x 8 in

WEIGHT*

Total weight	10,803 lbs
Live load in travelling position	91.2 psf
Live load in working position	45.5 psf
Point load per outrigger plate, max.	6,744 lbf

POWER SOURCES

Standard power sources:	
■ Combustion engine (Diesel)	Kubota D902 (16,1 kW / 21,6 hp)
Fuel tank capacity (Diesel engine)	13.74 gal



STANDARDS



EN ISO 9001



ANSI 92.20:2020
CSA 354.6:2017
"Design & manufacture criteria"

* The technical data may deviate +/- 3 % from the specified values.

* Weight and dimensions may vary depending on options and accessories.

Features



CHASSIS

- Powerful track drive with hydraulic braking system
- Precise manoeuvring via sensitive remote control
- White, non-marking rubber tracks with specially arranged profile for optimal grip
- Hydraulically height- and width-adjustable crawler track drive

STABILIZATION

- Electrohydraulic stabilizers with automatic levelling and ground pressure sensor system
- 4 sliding pads (33.5" x 13.4" x 3.0")

BOOM SYSTEM

- All functions available via radio remote control
- Stepless, electrical proportional control system with intuitive operation
- 180° platform rotation for additional flexibility
- Turntable rotation via high-performance slewing ring and hydraulic motor

POWER SOURCE

- Diesel engine Kubota D902 (16,1 kW / 21,6 hp)
- Start-stop device for combustion engine in the platform

PRODUCTIVITY, SAFETY, QUALITY

- Hydraulic emergency lowering via electric pump
- Lockable storage box
- Protected, internal power track for platform control
- Hydraulic system filled with biodegradable hydraulic oil
- High-quality paint in RAL 3020 (red)
 - Hydraulic cylinders in RAL 9006 (white aluminium)
- Unlockable check valves located directly on hydraulic cylinders
- Hydraulic system protected by pressure relief valves
- Hydraulic tank, emergency control, connecting cables and hoses are mounted protected
- Platform insulated up to 46 kV (category C)
- Hour meter
- Fuzzy control technology
- Tree package, including
 - 4 covers, piston rod (stabilizer)
 - Cover (telescopic cylinder hydraulic connection)

OPTIONS*

- Platform (45.27" x 21.96")
 - Platform capacity, max. (639 lbs) 2 person
- Hydraulic winch on the platform
 - Operation via radio remote control

* Weight and dimensions may vary depending on options and accessories.

Product specifications are subject to change without notice or obligation. Photographs and drawings in this document are for illustrative purposes only. Refer to the appropriate Operator's Manual for instructions on the proper use of this equipment. Failure to follow the appropriate Operator's Manual when using our equipment or to otherwise act irresponsibly may result in serious injury or death. The only warranty applicable to our equipment is the standard written warranty applicable to the particular product and sale and we make no other warranty, expressed or implied. Products and services listed may be trademarks, service marks or trade-names of TEUPEN Maschinenbau GmbH and/or its subsidiaries in the U.S.A. and many other countries. "TEUPEN", "Access redefined" and "LEO Series" are registered Trademarks of TEUPEN GmbH in the United States of America and many other countries. © 2021 TEUPEN Maschinenbau GmbH.

CONTACT

TEUPEN North America Inc.

10701 Southern Loop Blvd.
Charlotte (Pineville), NC 28134
USA

Phone (704) 248-9888
Fax (704) 248-9889
E-mail info@teupen-usa.com



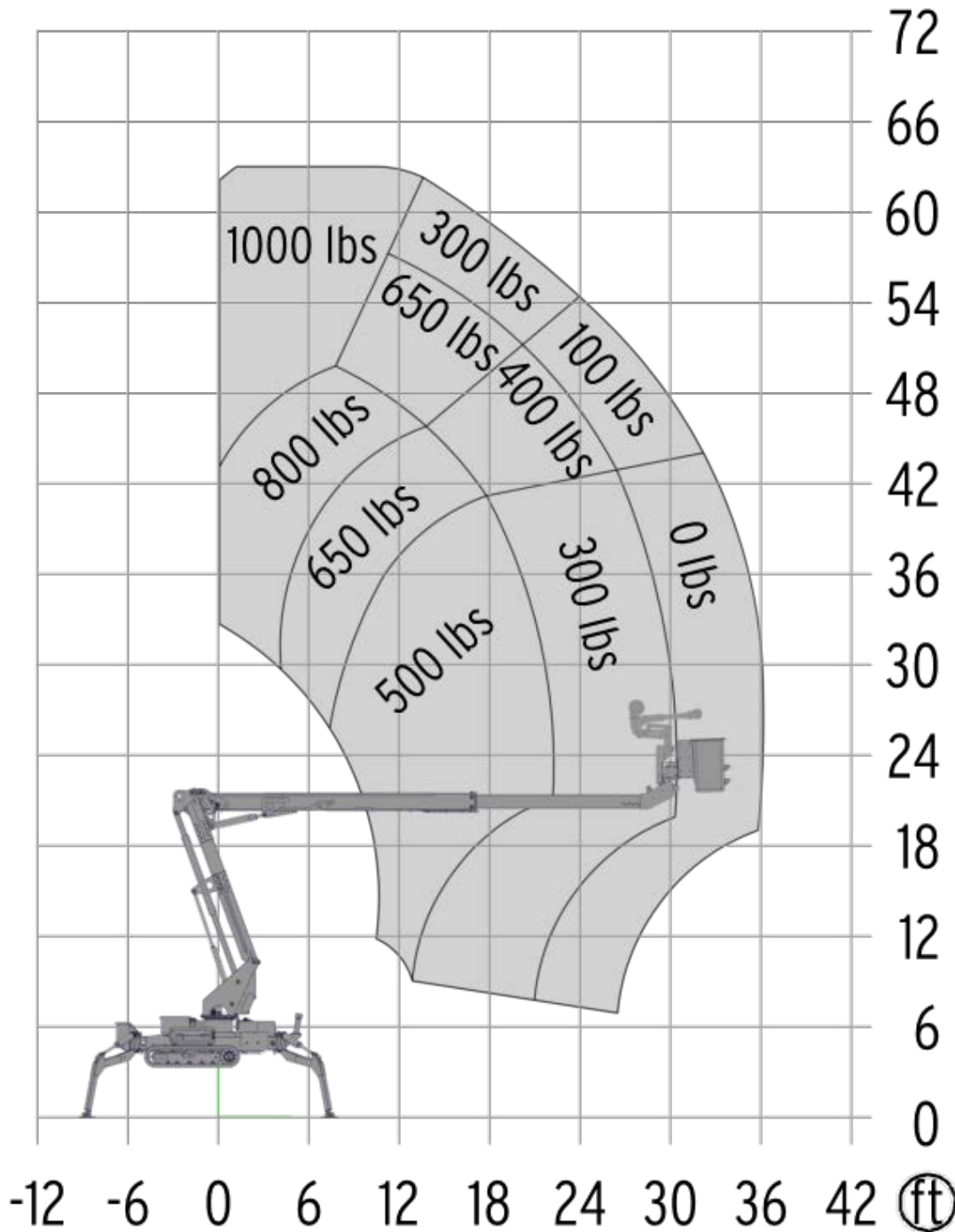
2021-A_en_US

Option

LEO 56Aic

TEUPEN[®]
...access redefined
since '77

HYDRAULIC WINCH



CONTACT

TEUPEN North America Inc.

10701 Southern Loop Blvd.

Charlotte (Pineville), NC 28134

USA

Phone (704) 248-9888

Fax (704) 248-9889

E-mail info@teupen-usa.com

* Weight and dimensions may vary depending on options and accessories.

Product specifications are subject to change without notice or obligation. Photographs and drawings in this document are for illustrative purposes only. Refer to the appropriate Operator's Manual for instructions on the proper use of this equipment. Failure to follow the appropriate Operator's Manual when using our equipment or to otherwise act irresponsibly may result in serious injury or death. The only warranty applicable to our equipment is the standard written warranty applicable to the particular product and sale and we make no other warranty, expressed or implied. Products and services listed may be trademarks, service marks or trade-names of TEUPEN Maschinenbau GmbH and/or its subsidiaries in the U.S.A. and many other countries. "TEUPEN", "Access redefined" and "LEO Series" are registered Trademarks of TEUPEN GmbH in the United States of America and many other countries. © 2021 TEUPEN Maschinenbau GmbH.



2021-A_en_US

www.teupen.com